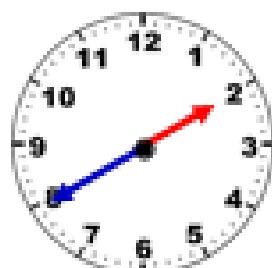




Match the clock faces

Draw a line to match the times in words to the correct clock faces. Each clock face and written time can only be used once.



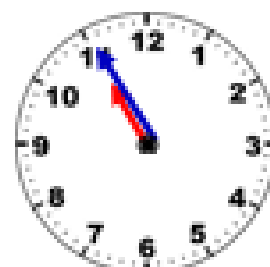
five minutes to two



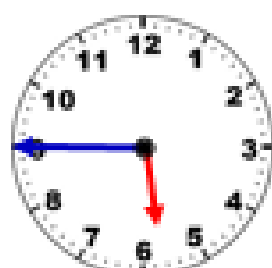
quarter to six



twenty minutes to two



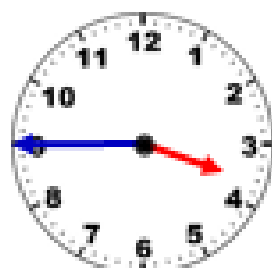
ten minutes to six



quarter to four



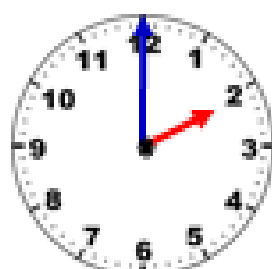
two o'clock



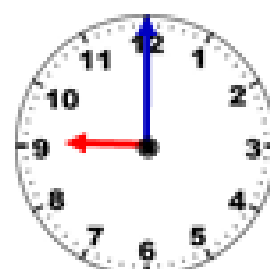
Nine o'clock



ten minutes to seven



five minutes to eleven



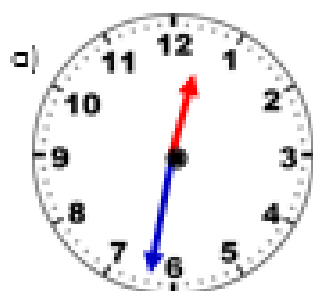
twenty five minutes to eleven

**Telling the time to the nearest minute**

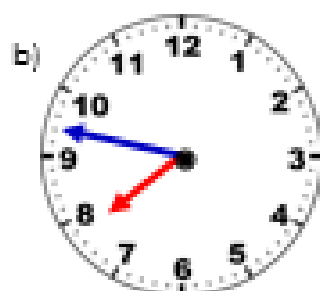
Use what you have learned so far in this unit to help you tell the time to the nearest minute.

Remember to be careful about how you count the 'minutes to' times.

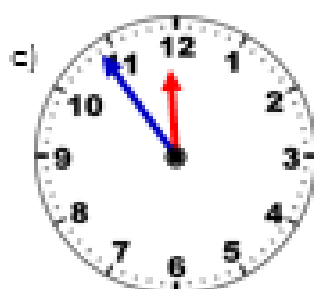
Write the time in words on the lines next to each clock.



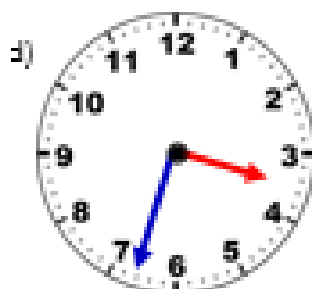
a) _____



b) _____



c) _____



d) _____

