

Welcome to Year 6 Maths

The lesson will begin at 11:30am

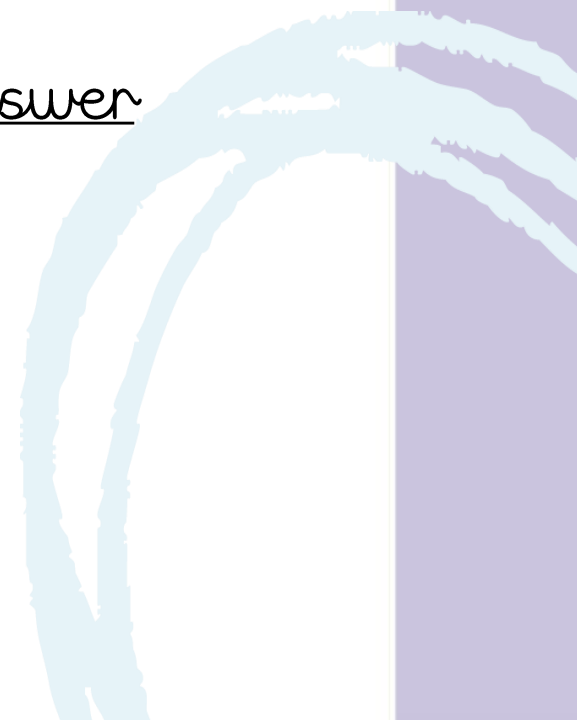


Turn your camera and microphone **off** please

08/02/21

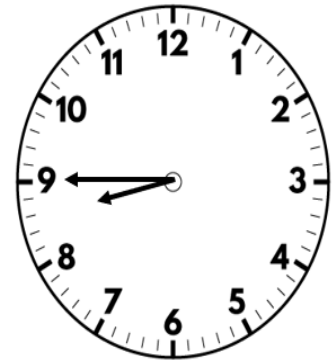
Maths Arithmetic

I can use various strategies to answer arithmetic questions.



Flashback 4

Year 6 | Week 3 | Day 4



- 1) Write one quarter as a percentage.
- 2) Work out 7×0.09
- 3) Multiply $\frac{1}{4}$ by 3
- 4) What is the 6 worth in the number 4, 623?

08/02/21

Maths

I can calculate percentages of
amounts

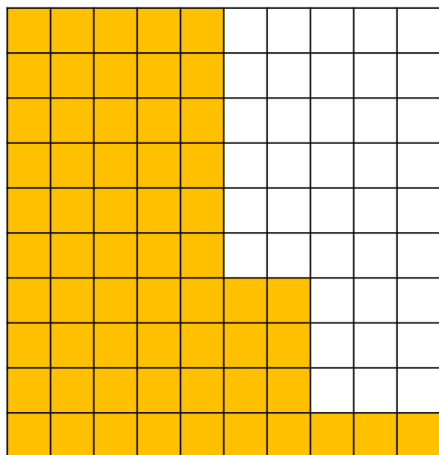
1) 100% of 11 =

100% of 425 =

100% of $\frac{100}{1000}$ =

100% of $\frac{2}{25}$ =

2) What percentage of the hundred square is shaded? Write the percentage as a fraction.



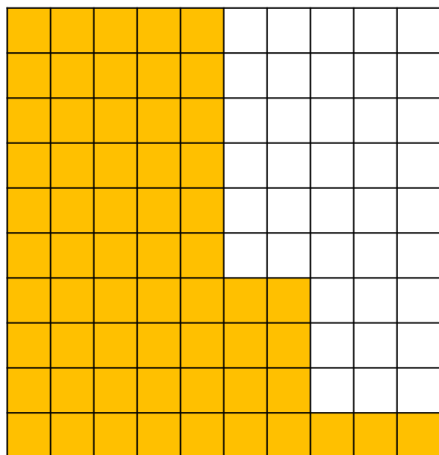
1) 100% of 11 = 11

100% of 425 = 425

100% of $\frac{2}{25}$ = $\frac{61}{100}$

100% of $\frac{2}{25}$ = $\frac{2}{25}$

2) What percentage of the hundred square is shaded? Write the percentage as a fraction.

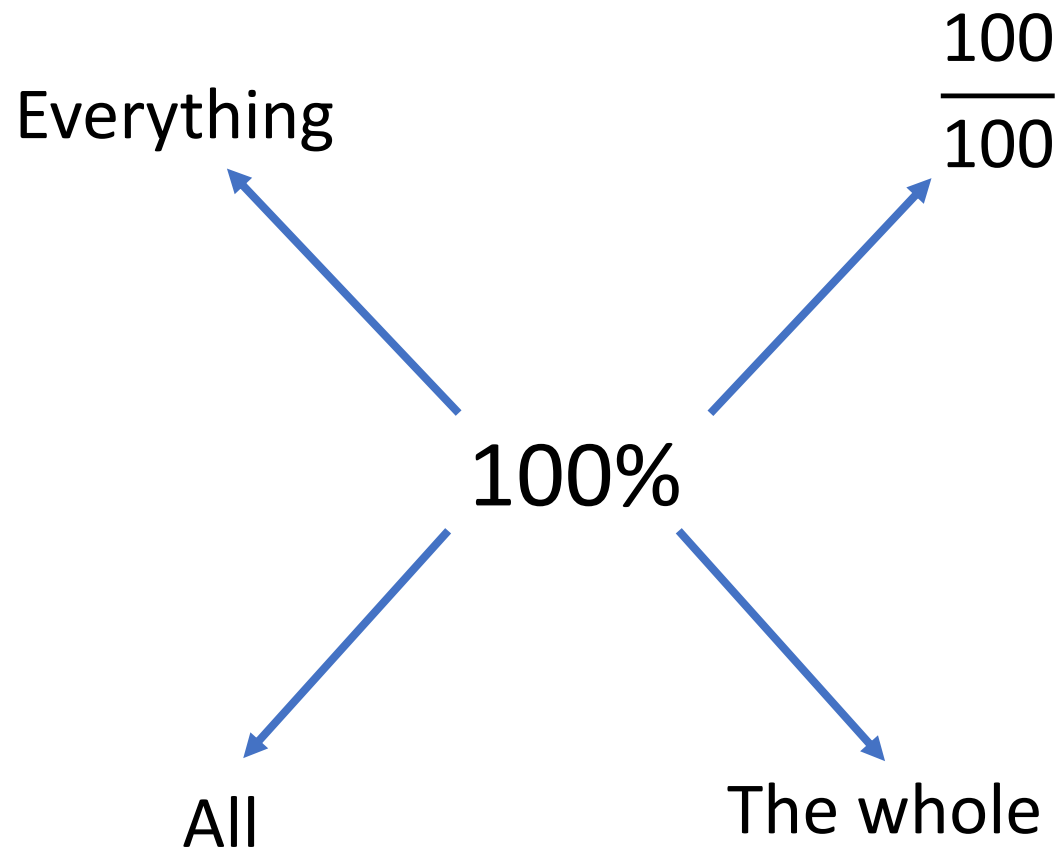


61%

$\frac{61}{100}$

LET'S LEARN





100%

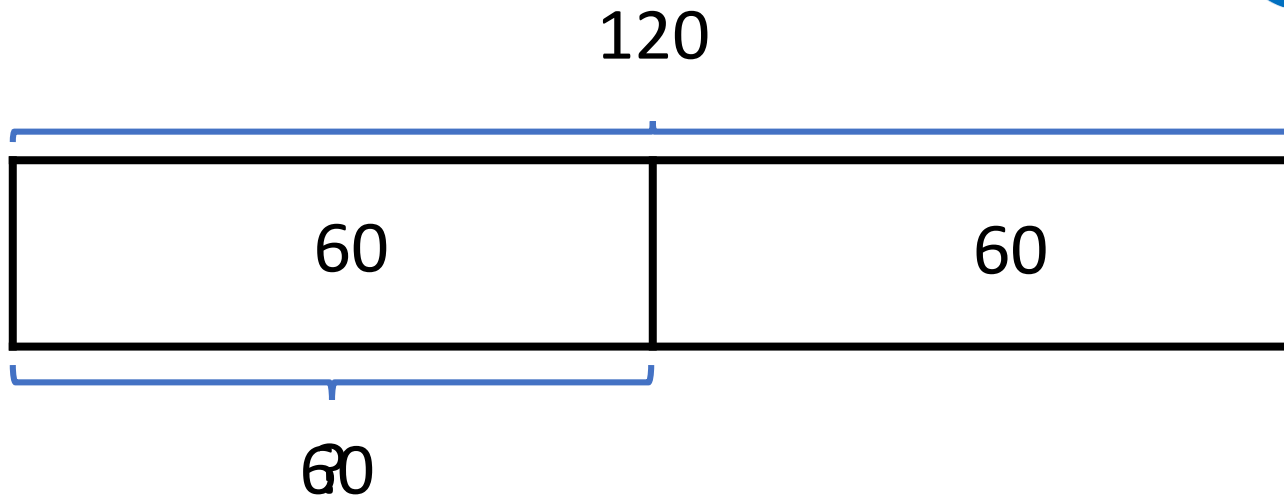


50%

$$100\% \div 2 = 50\%$$

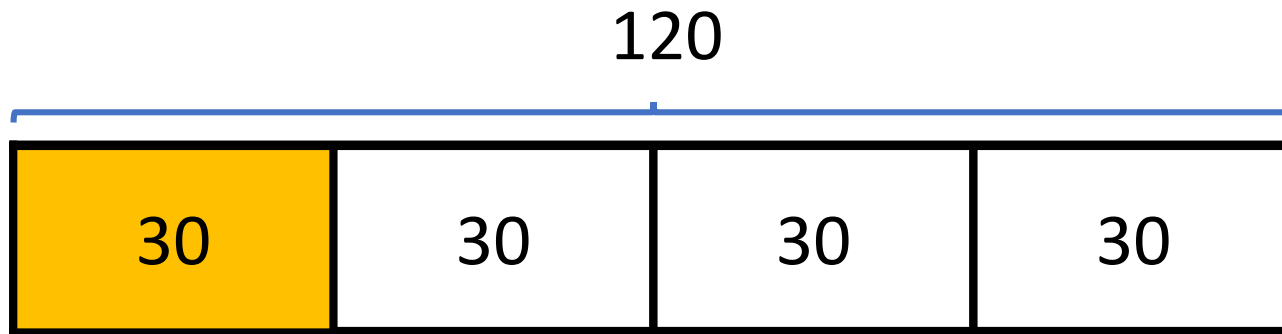
$$50\% = \frac{1}{2}$$

Have a think



$$50\% \text{ of } 120 = 60$$

$$120 \div 2 = 60$$



Using the bar model, how could we find 25% of 120?

$$120 \div 4 = 30$$

$$30 \div 25 = 1 \frac{1}{4}$$

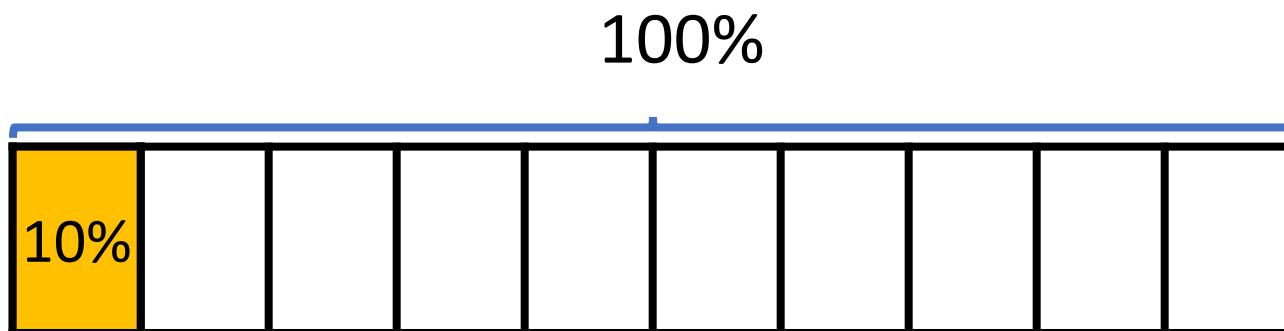
$$120 \div 100 = 1 \frac{1}{4}$$

50% of 120 = 60

Have a think



What percentage would the shaded part represent?



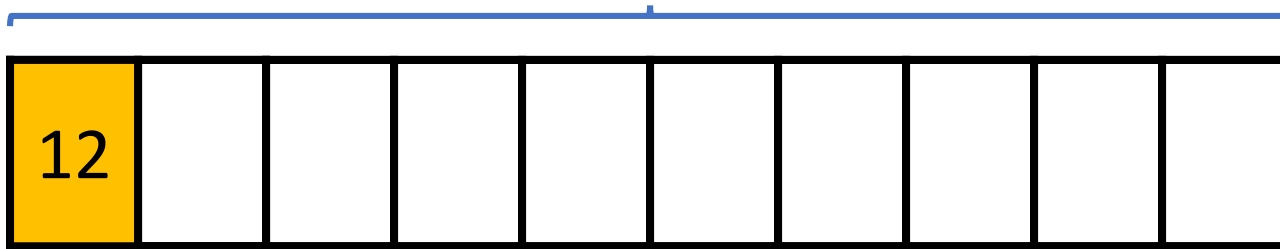
$$100\% \div 10 = 10\%$$

$$10\% = \frac{1}{10}$$

Have a think



120



$$10\% \text{ of } 120 = 12$$

$$120 \div 10 = 12$$

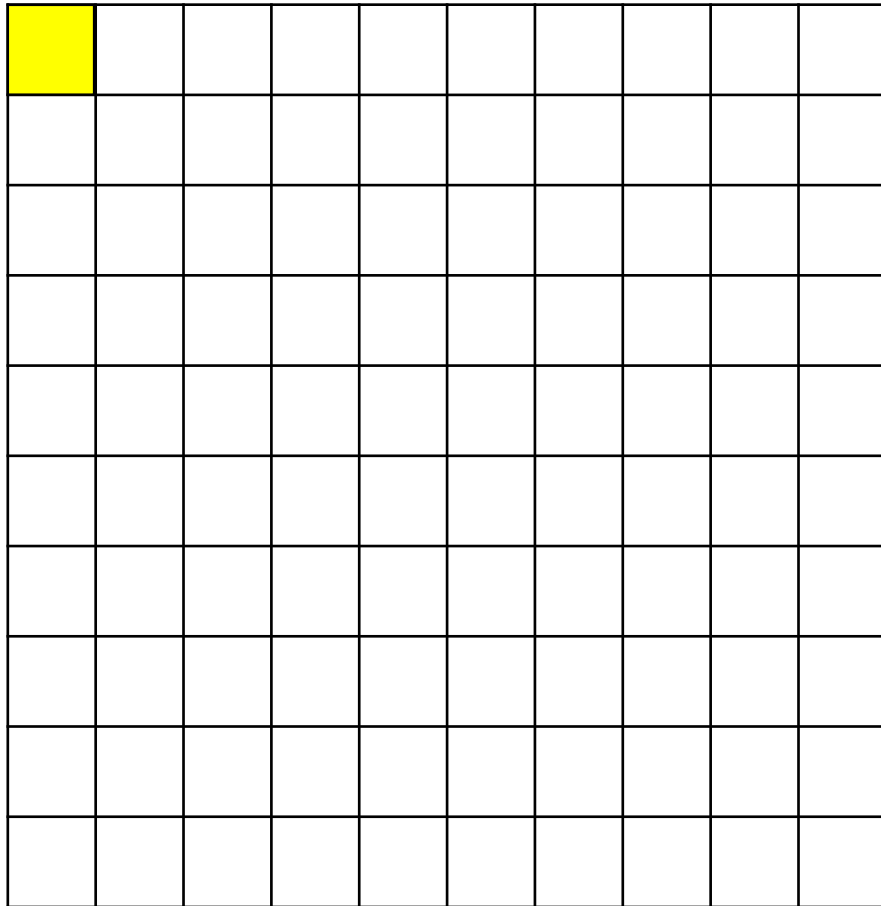
YOUR TURN

Have a go at questions
1 - 3 on the worksheet



Find 1% of 200

The whole is worth 200



$$200 \div 100 = 2$$

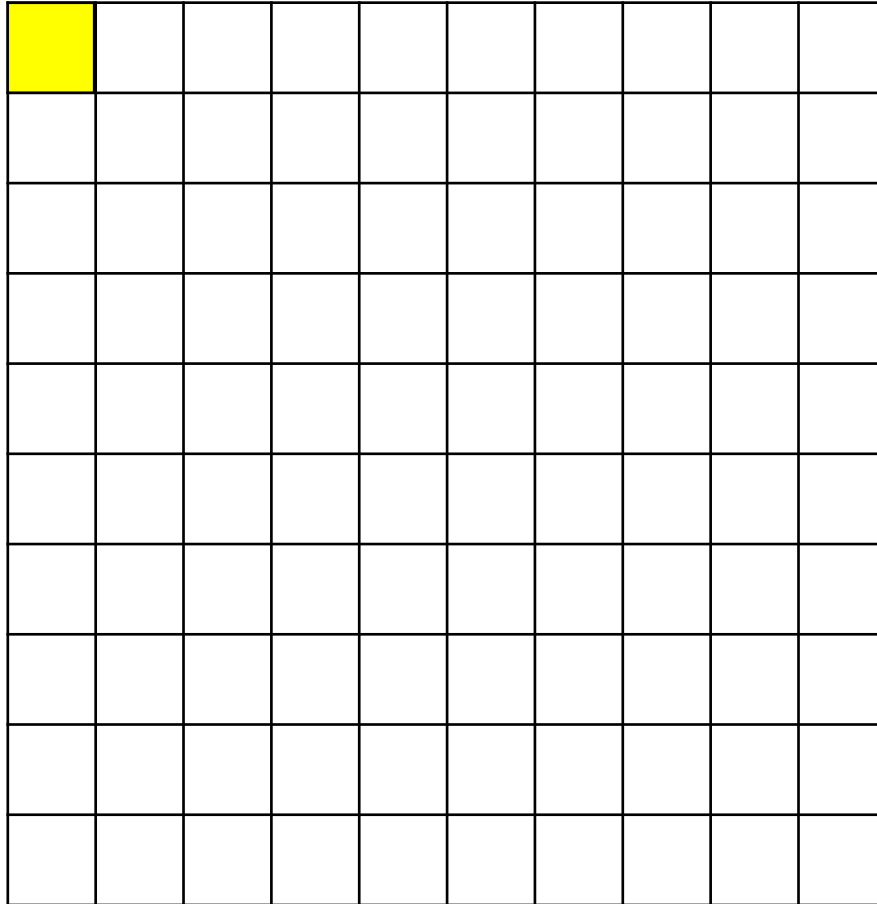
$$1\% \text{ of } 200 = 2$$

Find 1% of 4,000

Have a think



The whole is worth 4,000

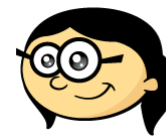


$$4,000 \div 100 = 40$$

$$1\% \text{ of } 4,000 = 40$$



Annie needs to make 1,270
cupcakes for a party.



In the morning she makes 50% of the cupcakes.

In the afternoon Annie makes another 10% of
her target amount of cupcakes.

How many more cupcakes does she need to
make?

Have a think



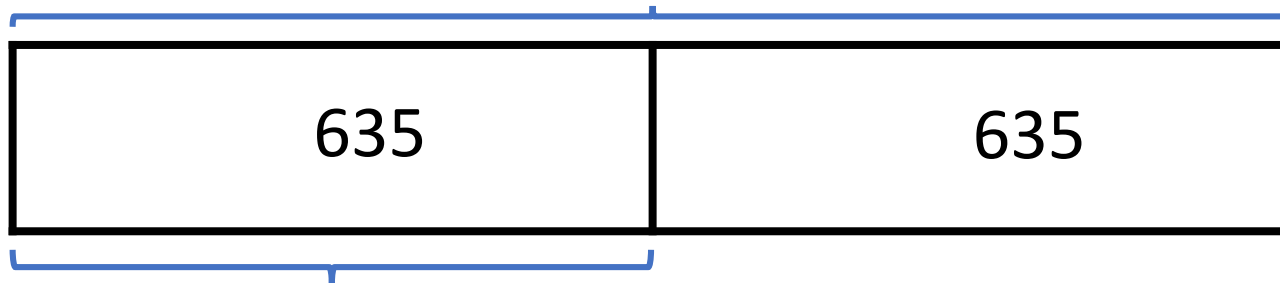


Annie needs to make 1,270
cupcakes for a party.



In the morning she makes 50% of the cupcakes.

1,270



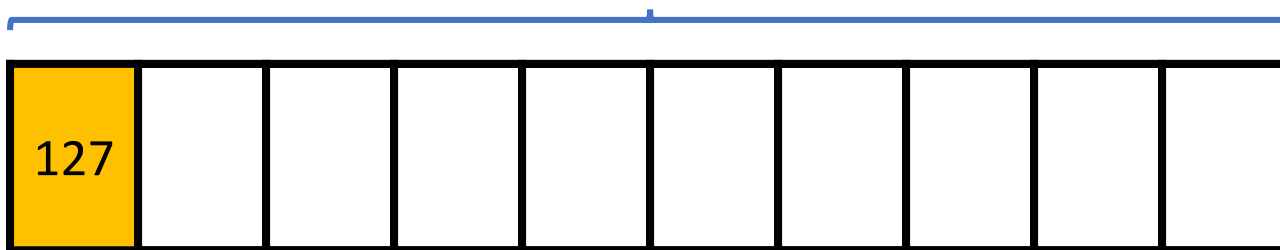
635

$$50\% \text{ of } 1,270 = 635$$

$$1,270 \div 2 = 635$$

In the afternoon Annie makes another 10% of her target amount of cupcakes.

1,270

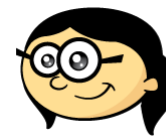


$$10\% \text{ of } 1,270 = 127$$

$$1,270 \div 10 = 127$$



Annie needs to make 1,270
cupcakes for a party.



In the morning she makes 50% of the cupcakes.
635

In the afternoon Annie makes another 10% of
her target amount of cupcakes.
127

How many more cupcakes does she need to
make? 508

$$635 + 127 = 762$$

$$1,270 - 762 = 508$$

YOUR TURN

Have a go at the rest of
the questions on the
worksheet

