

Welcome to Year 6 English

The lesson will begin at 09:30 am



Turn your camera and microphone **off** please

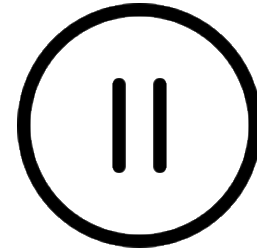


Tuesday 19th January, 2021.

I will know the features of a haiku poem.

Do Now:

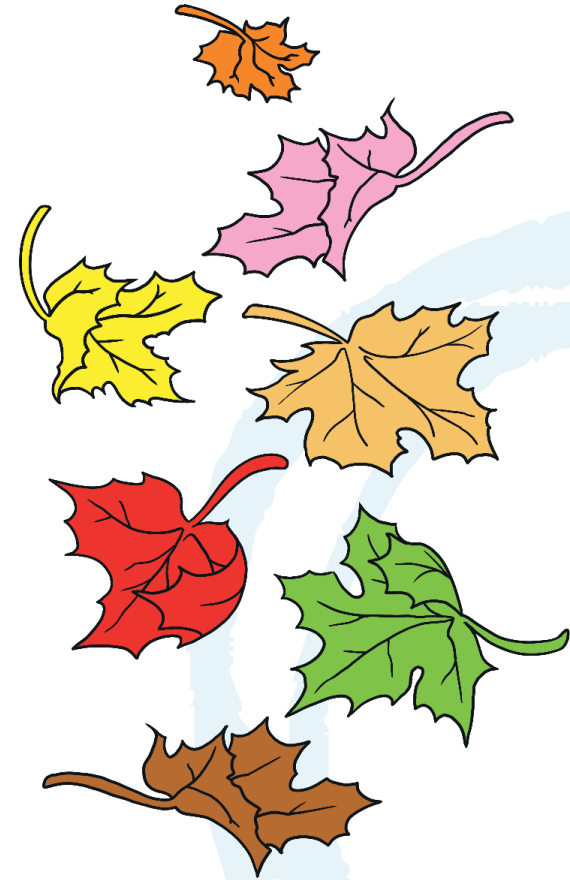
What theme links to our book
'Shackleton's journey'?



I will know the features of a haiku poem.

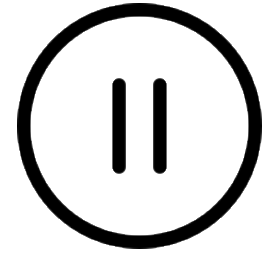
Haiku poems are a traditional Japanese art form. Here's
one...

Winter is coming.
Snow will be arriving soon.
We should rake the leaves.



I will know the features of a haiku poem.

What do you notice about the poem?



Winter is coming.
Snow will be arriving soon.
We should rake the leaves.

Think about:

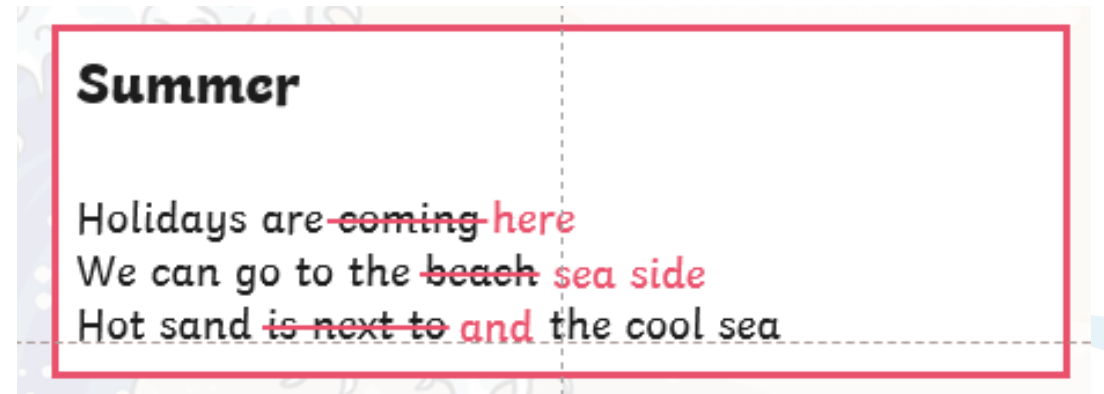
- the poem's theme;
- how many lines are in each poem;
- how many syllables in each line.

5 syllables in first line
7 syllables in middle line
5 syllables in final line

Three lines in each poem.

Three lines in each poem.

Let's have a go!



1. Choose a theme- Summer.
2. Next, we choose two or three ideas which will flow together from the list above.
3. Now we have our ideas, let's try to fit them into the 5-7-5 syllable format.

Plenary

- Each poem has only 3 lines.
- The syllable pattern of the poem should be 5-7-5.
- Haiku are often written about seasons and nature.
- So now you know – a haiku is a poem, not something a pigeon says on the top of a statue!