

Welcome to Year 4 English

The lesson will begin at 9:15am



Turn your camera and microphone off please



I will know how to make predictions
using clues from the text.

Do Now – what is a prediction?

Clues from the text + what we know = a prediction.

I will know how to make predictions
using clues from the text



What happened in the book last week?

The children tried to go to sleep but...



They stood up straight and they stared across the earth and they stared into their minds and they searched their thoughts and they searched their dreams and they wondered.

They started to walk, and to talk as quickly as they walked.

"Listen," said Sue.

"What we need now is a thing called a wolf."

"A wolf?" said Little Ben, who had to hurry to keep up.

"Yes," said Harry.

"Sue's right. We absolutely definitely need a wolf."

"What in the world is a wolf?" asked Ben.

"Oh," said Harry.

"A wolf is very, very wolfy."

"It is a great big hairy thing with a ... great big head!" said Sue.



"That's right," agreed Harry. "And it has great big massive teeth."



"And long strong legs and ... great big paws," said Sue.



I will know how to make predictions
using clues from the text

I do:

Prediction = clues from the text + what you know

For example:

I predict that Harry and Sue might make the wolf **because in the text** they are starting to describe it and in the book they have already been able to make a bird and snake.

I will know how to make predictions
using clues from the text

We do:

What do you predict will happen next?





I will know how to make predictions
using clues from the text

You do:

Complete your worksheet, make 3 predictions about what you think will happen next.



Welcome to Year 4 Writing

The lesson will begin shortly (brain break)



Turn your camera and microphone off please

You will need pen/pencil and paper.

I will know how to make inferences about a character's emotions.

Key Vocabulary:

Inference

Emotions



I will know how to make inferences about a character's emotions.

Do now:

Which two children want to make the wolf?

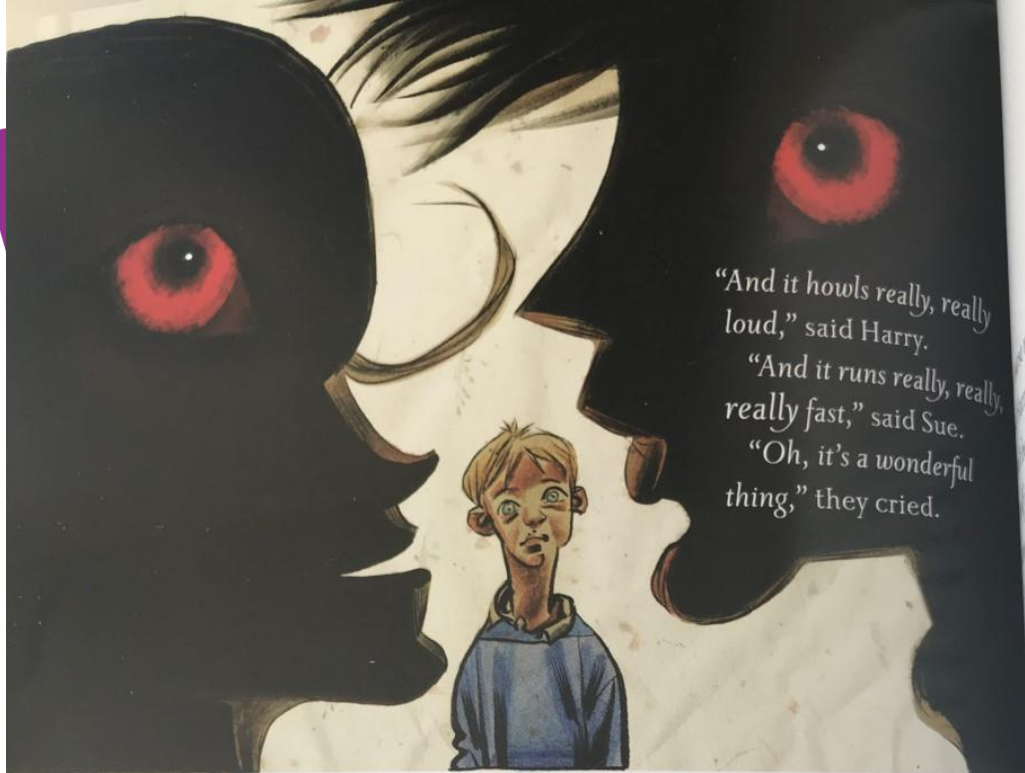
- A) Ben and Harry
- B) Harry and Sue

I will know how to make inferences about a character's emotions.

I will read the next few pages once.

I will then make an inference about a character's emotions based on clues.

You will then have a go.



"And it howls really, really loud," said Harry.

"And it runs really, really fast," said Sue.

"Oh, it's a wonderful thing," they cried.



Little Ben said, "But isn't that a bit...?" He scratched his head, as if he didn't know the word he was looking for.

"A bit scary," he said at last.

"No!" said Harry and Sue.

"Isn't it a bit ... dangerous?"



"Of course not!" said Harry and Sue.

"Don't be silly. Don't be scared. A wolf is a wonderful, beautiful, marvellous thing."

And they stood still and stared up into the clouds and they yelled, "Isn't it? Isn't a wolf a wonderful, beautiful, marvellous thing?"



And the one god who heard them looked down and smiled, and shrugged, and muttered, "Yes, children. I suppose it is." And fell fast asleep.



"See?"
said Harry.



"See?"
said Sue.



"Hmm,"
said Little
Ben.



Harry found some clay;
Sue fetched some wool.
Harry collected some big
sticks; Sue gathered some
big stones. They got some
petals and nuts and grass.
They made a wolf. There it
was, lying on the ground
beside them, waiting to be
called.

Little Ben
watched the wolf.
He walked towards
a nearby tree.

"If you don't mind,"
he said. "I think
I'll climb
this tree."

And up
he went.



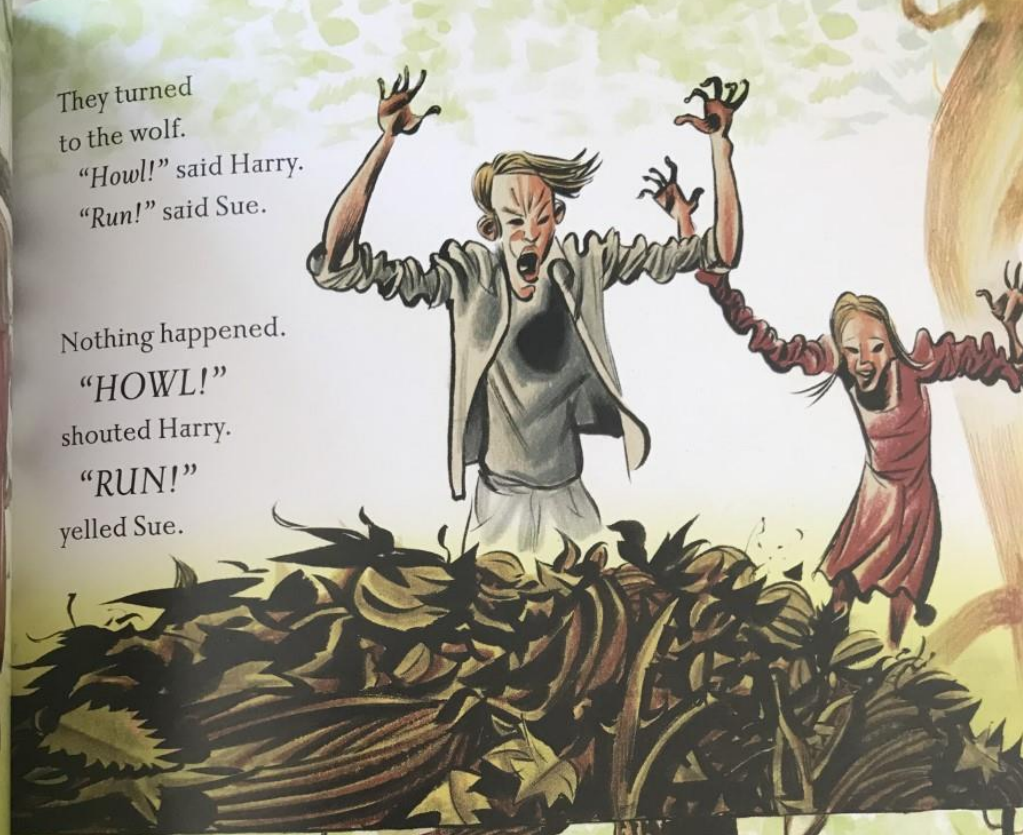
"Silly boy,"
said Harry
and Sue.

They turned
to the wolf.
"Howl!" said Harry.
"Run!" said Sue.

Nothing happened.

"HOWL!"
shouted Harry.

"RUN!"
yelled Sue.



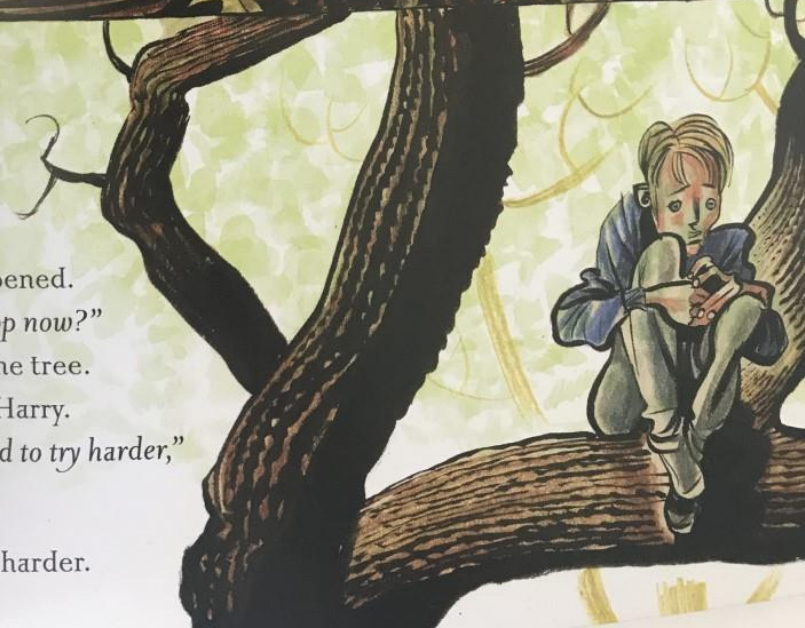
Nothing happened.

"Shall we stop now?"
said Ben up the tree.

"No!" said Harry.

"We just need to try harder,"
said Sue.

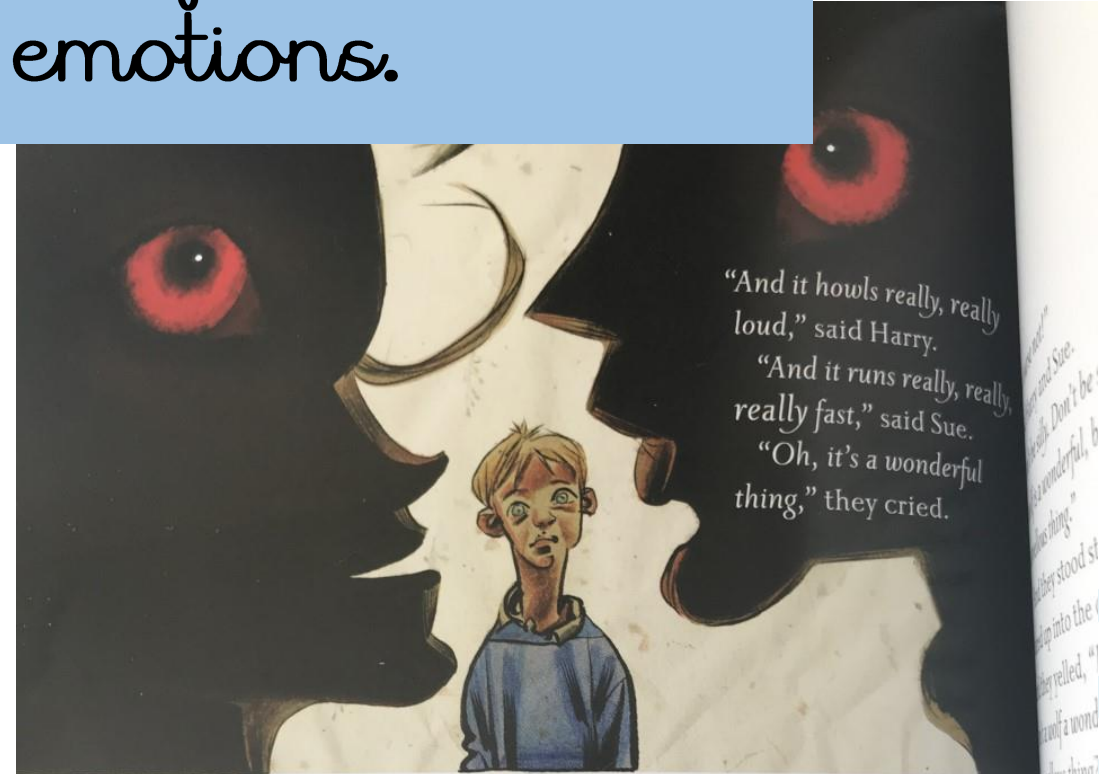
So they tried harder.



I will know how to make inferences about a character's emotions.

I do: what does Sue feel about the idea of making the wolf?

In the text Sue says.... "Oh, it's a wonderful thing"
So I think she feels.... excited about creating the wolf.



"And it howls really, really loud," said Harry.
"And it runs really, really, really fast," said Sue.
"Oh, it's a wonderful thing," they cried.



Little Ben said,
"But isn't that a bit...?"
He scratched his head, as if he didn't know the word he was looking for.
"A bit scary," he said at last.

"No!" said Harry and

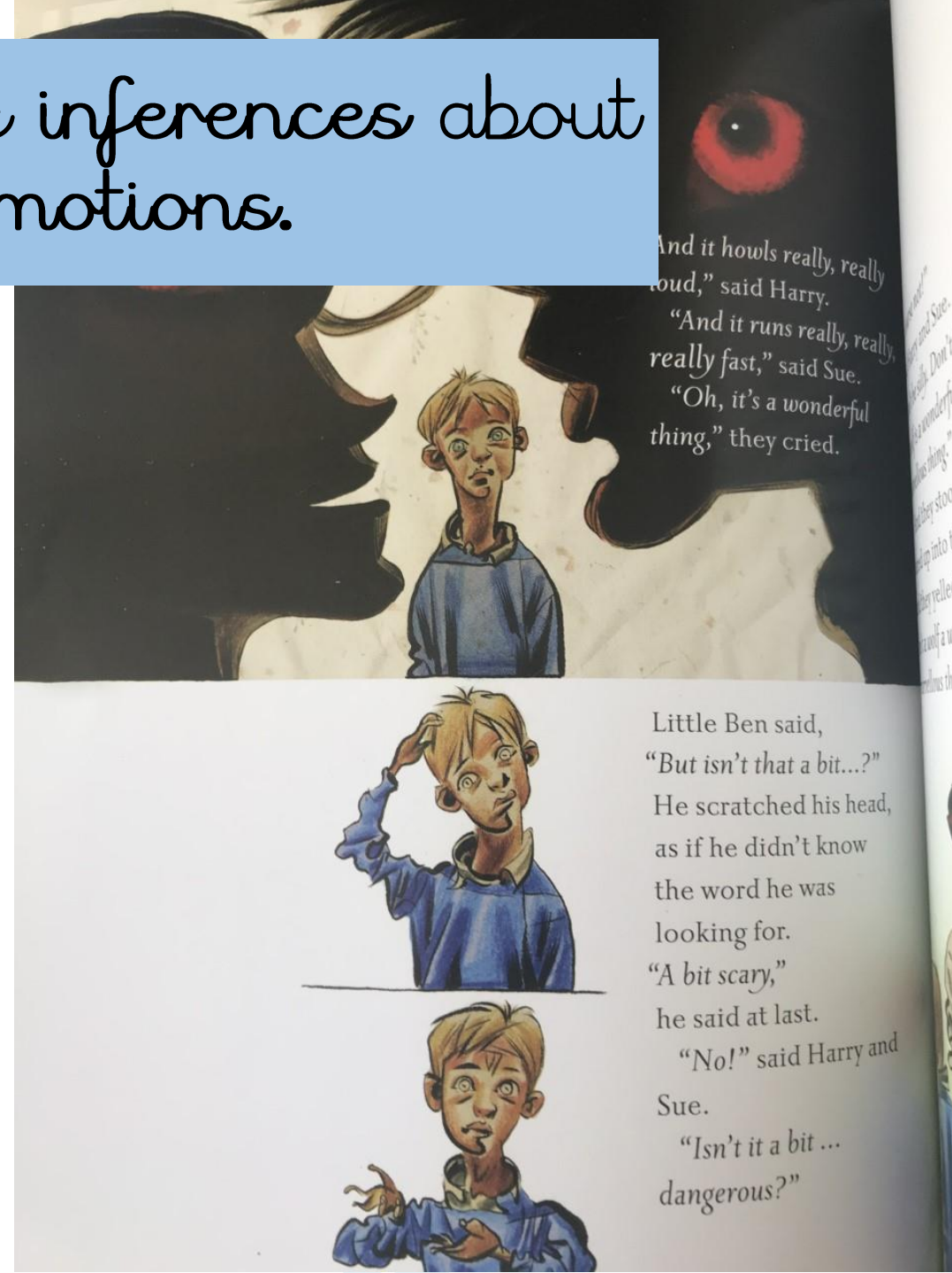
Sue

I will know how to make inferences about a character's emotions.

We do: how does Ben feel about the idea of a wolf?

In the text Ben says.....

So I think he feels.....





I will know how to make inferences about a character's emotions.

Go to assignments, complete the worksheet making inferences about the characters feelings.

