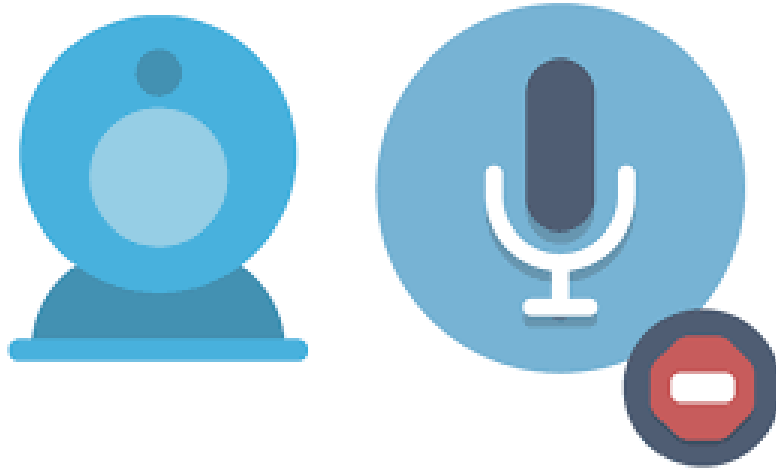




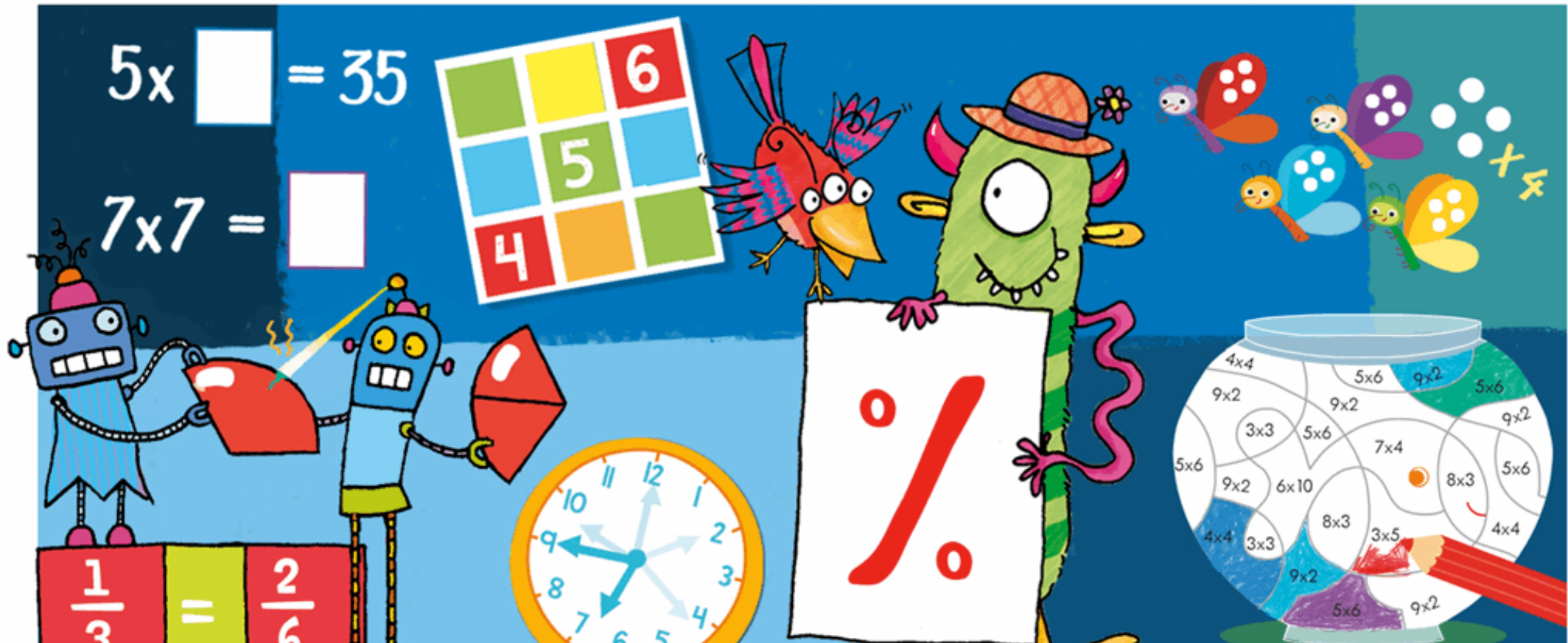
Welcome to Year 4 Maths

The lesson will begin at 11:15am



Turn your camera and microphone off please

Maths Meeting





What is the question?

The answer is 1340



564

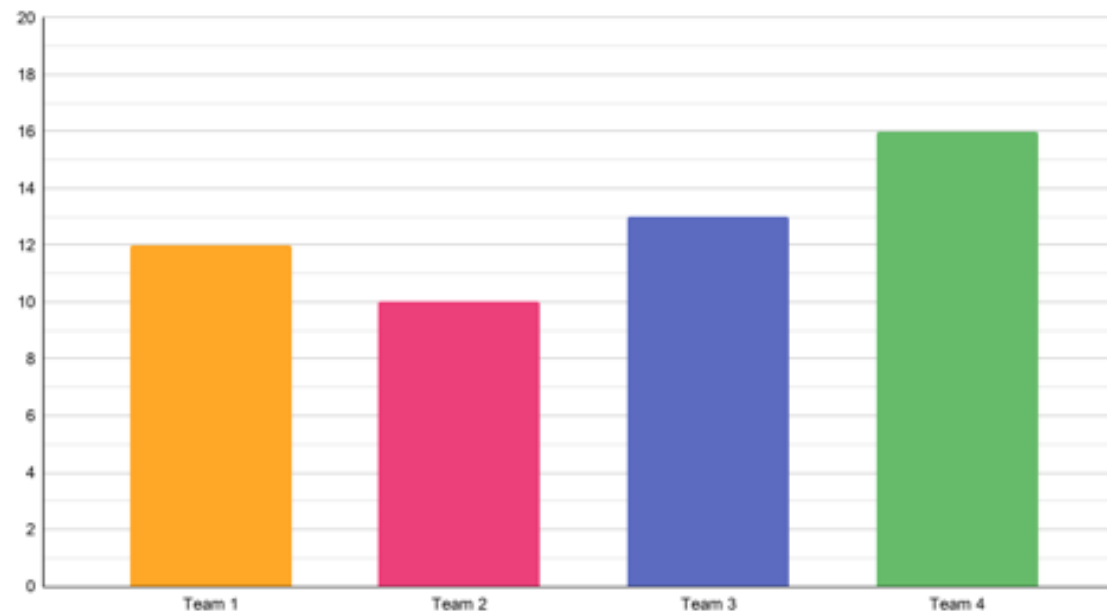
Read this number

What is the value of the digit 5?

Multiply the number by 10.

What is 7 less?

A Bar Chart to Show the Points Scored in PE



1

How many points did team 3 get?

13

2

What is the difference in points between team 1 and team 4?

5

3

How many points did team 2 and 3 get altogether?

23

4

What is the difference in points between team 2 and team 3?

3

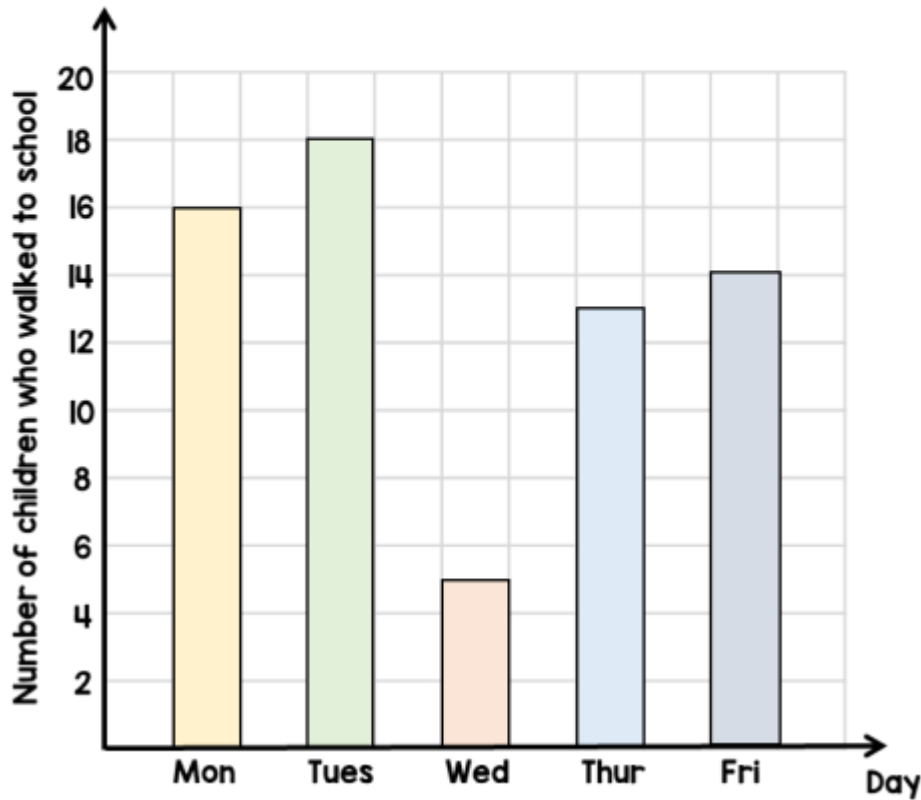
5

What information is missing from the bar chart?

Labels on each axis

I

There are 25 children in a class.
The bar chart shows the number of
children in the class who walk to
school each day.



How many children walked to
school on Monday?

16

One of the days it rained ,
which day do you think it was?

Wednesday as less
people walked to
school

Review

7a. Which 3 distances combined make $4\frac{3}{4}$ km?

$2\frac{1}{2}$ km

one thousand
metres

250m

2,000m

3km





Key Vocabulary

Perimeter
Right angle
Rectilinear shape

Sentence Stems:

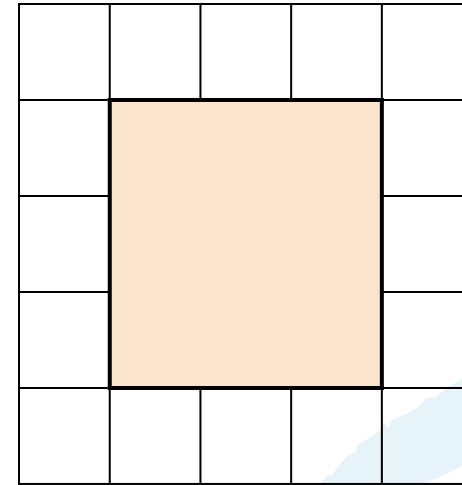
A rectilinear shape is a shape where all the sides meet at right angles.

The perimeter is the distance around a 2-D shape.



I will know how to find the perimeter of a rectangle.

Each square is $1\text{cm} \times 1\text{cm}$.
What is the perimeter of this shape?



A) 16cm

C) 3cm

→ B) 9cm

D) 12cm



I will know how to find the perimeter of a rectangle.

Explain what the 'perimeter' of a shape is.

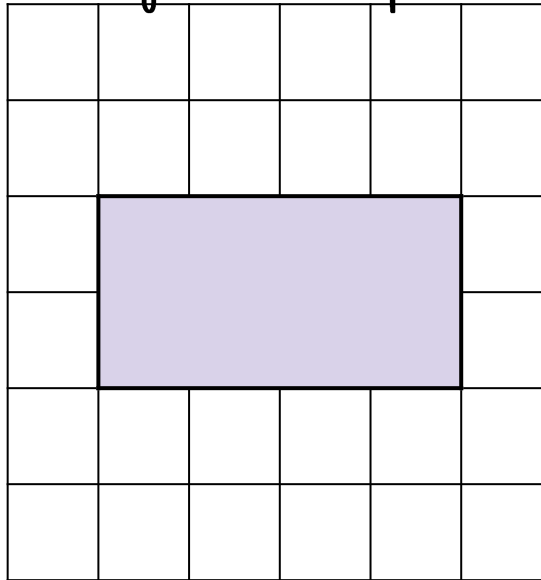
The perimeter is the distance around a 2-D shape.



I will know how to find the perimeter of a rectangle.

The shape is drawn on a 1cm x 1cm grid.

How can you use this information to find the perimeter of the shape?

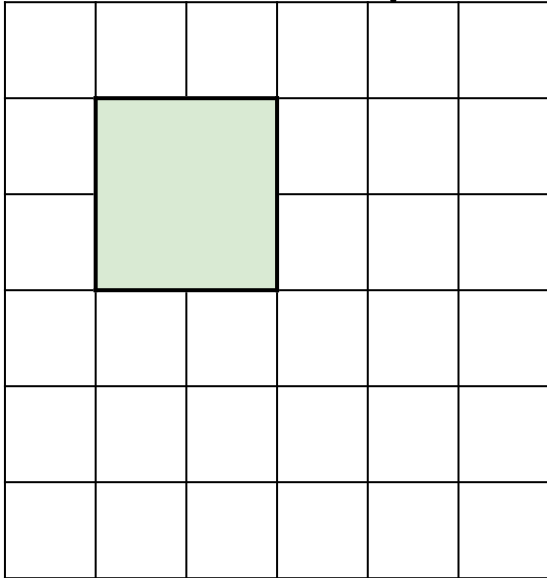


If each square is 1cm x 1cm, the rectangle has sides of 4cm (longer sides) and 2cm (shorter sides). The perimeter is 12cm.

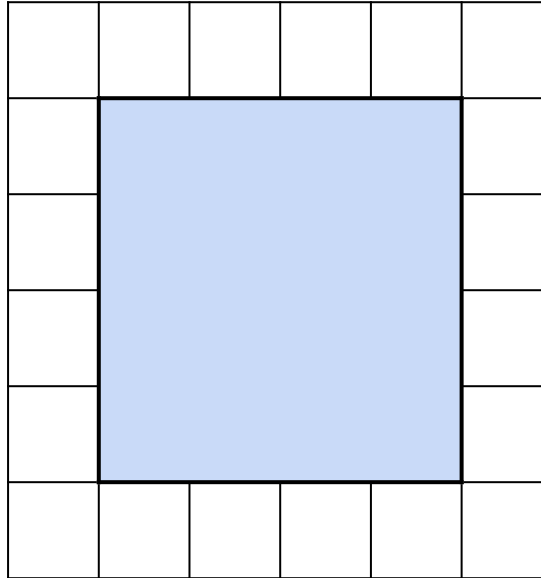
I will know how to find the
perimeter of a rectangle.

The shape is drawn on a 1cm x 1cm grid.

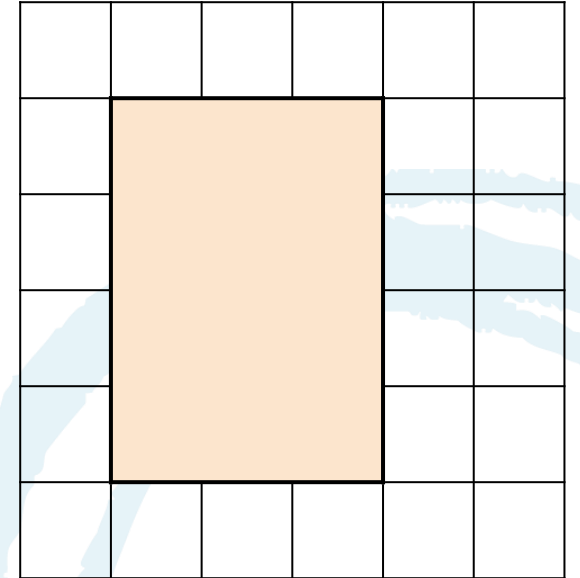
What is the perimeter of these rectilinear shapes?



Perimeter: 8cm



Perimeter: 16cm



Perimeter: 14cm

I will know how to find the perimeter of a rectangle.

The astronauts are talking about the perimeters of these shapes.

Who do you agree with?

Explain your reasoning.

?		X	X	X			X					
X	<div></div>	<div></div>	<div></div>	<div></div>	X	X	<div></div>	X				
X					X	X						
X					X	X						
X					X	X						
X					X,X	X			X	X,X	X	
X					X				X	<div></div>		
	X						X	X	X			

The first shape has a larger perimeter. It has a perimeter of 13cm.

The second shape has a larger perimeter. It has a perimeter of 15cm.

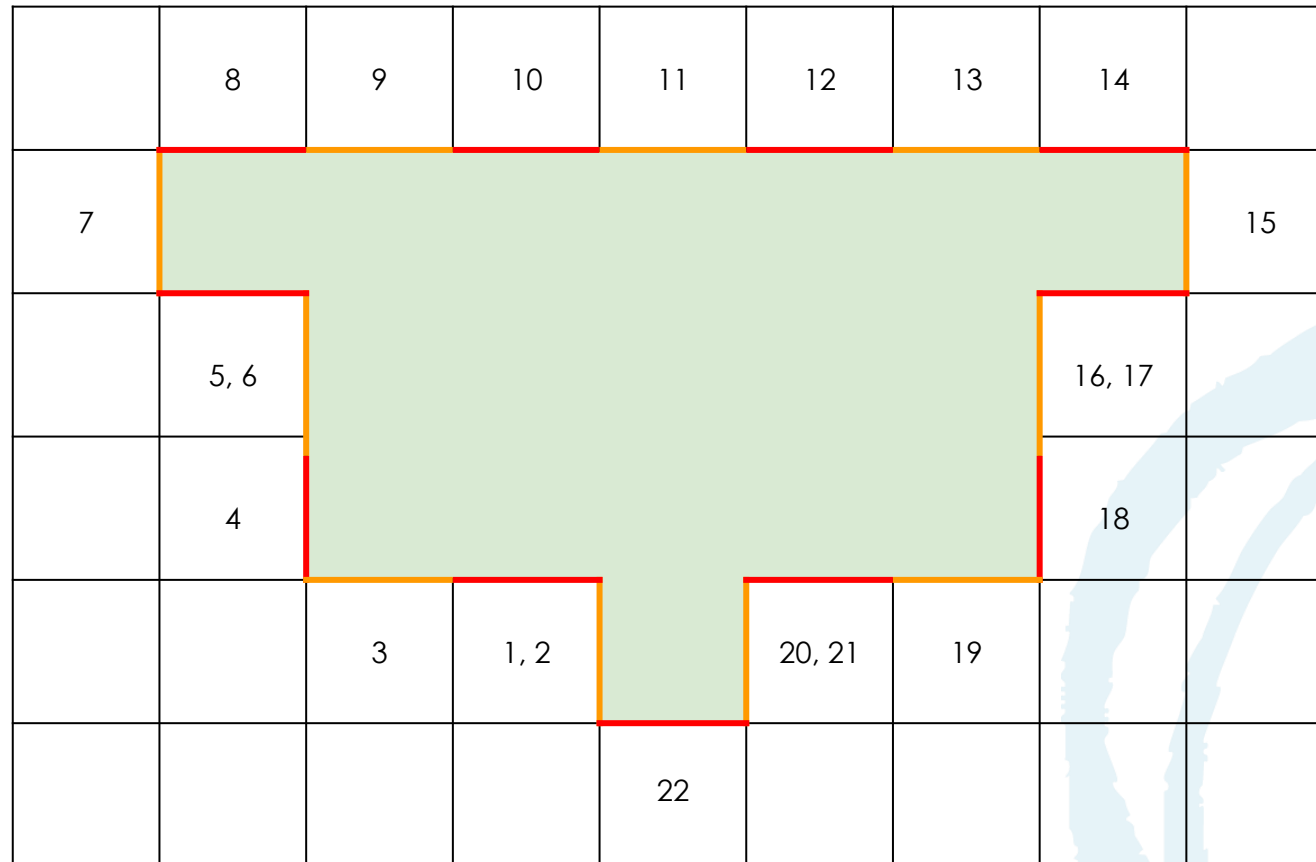




I will know how to find the perimeter of a rectangle.

How would I find the perimeter of this shape?

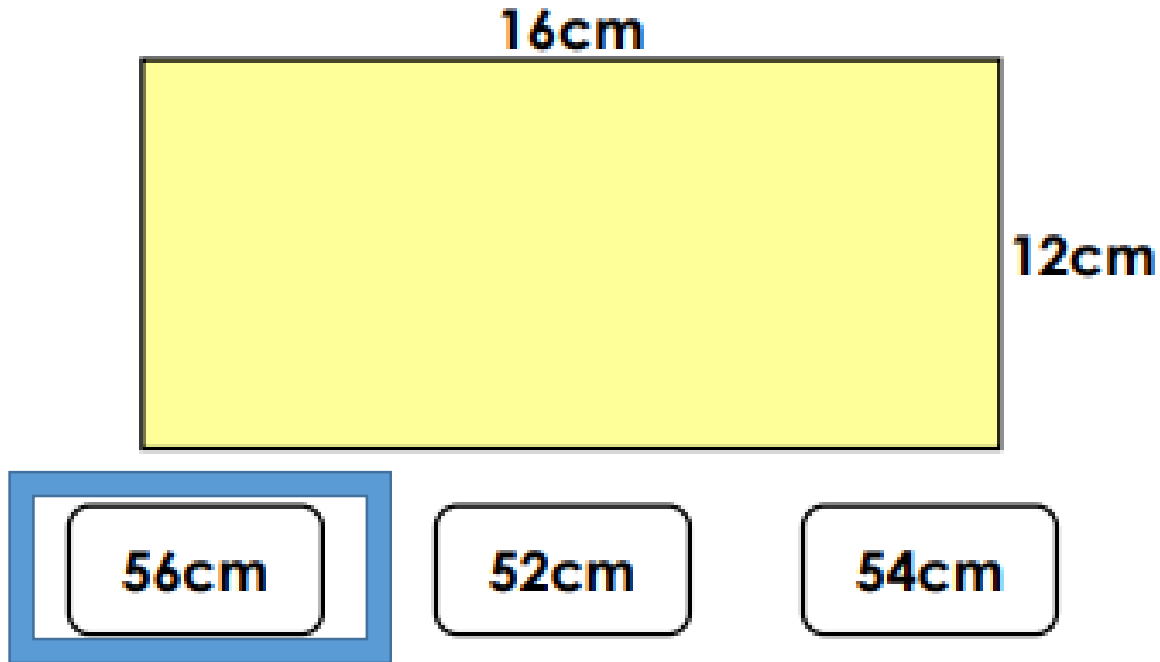
The shape is drawn on a 1cm x 1cm grid.



We do- Problem solving



5a. Circle the perimeter of the rectangle.



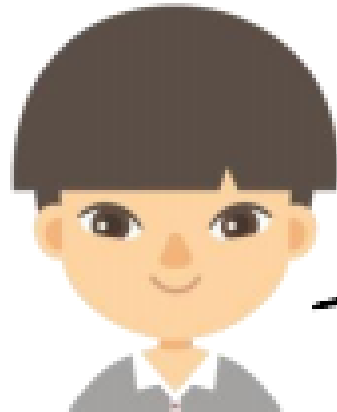


Now go onto the assignments page on Teams and complete your assignment. Either submit via Teams if you cannot do this please email your work to year4@oasisiskinnerstreet.org

I will know how to find the perimeter of a rectangle.

Plenary

6a. Ralph says,



If a shape has a perimeter of 31 cm, then it cannot be a rectangle.

Is Ralph correct? Prove it.