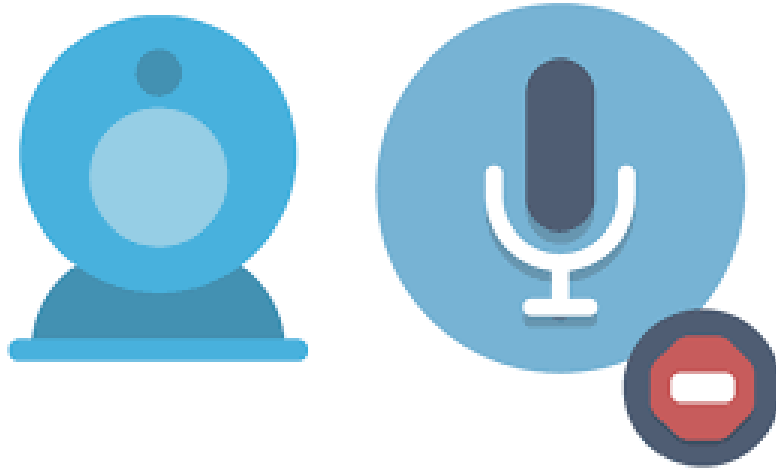




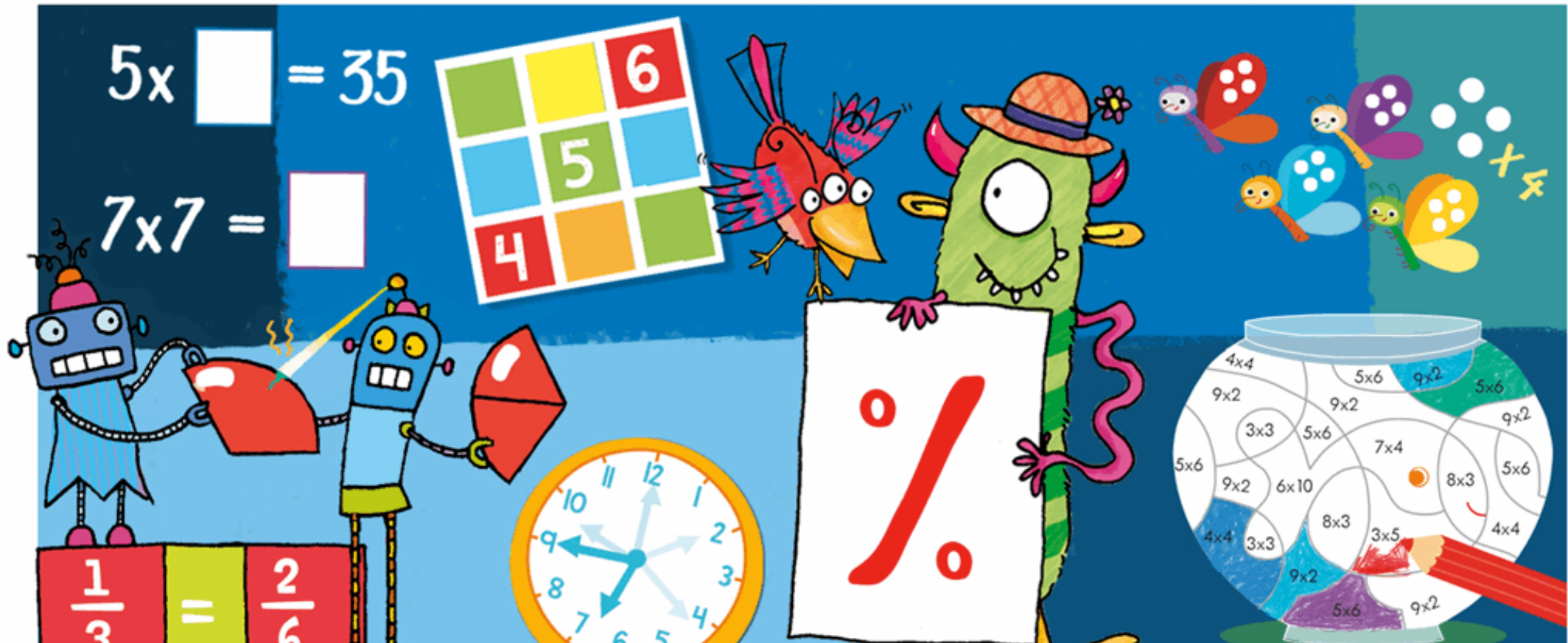
Welcome to Year 4 Maths

The lesson will begin at 11:15am




Turn your camera and microphone off please

Maths Meeting



12,284

Read this number out loud.
What is the value of the digit 2?
What is 1000 more?
What is 20 more?

A light blue, hand-drawn style swirl is located on the right side of the page, starting from the middle and curving upwards and then downwards.

What is the missing number?

$$\underline{40} \times 40 = 1600$$

$$40 \times \underline{40} = 1600$$

$$1600 \div \underline{40} = 40$$

$$1600 \div 40 = \underline{40}$$

- Divide 99 by 9.
 - 11
- Which is smallest? 123, 321, 113, 122.
 - 113
- Put these numbers in order from biggest to smallest.
54, 45, 55, 44
 - 55, 54, 45, 11
- What is $621 - 11$?
 - 610
- Multiply 80 by 3
 - 240

How many slices of cake?



12

- I want to share my cake equally between my 3 friends.
How many friends might I have?

Say number bond to 1000.

110

660

250

500

950

750

1000

50

300

200

350

450

100

700

150

400

550

650

- I want to make a fruit cocktail. I use 250ml of apple juice, 250ml of pineapple juice and 200ml of grapefruit juice. How much juice did I make?
 - 700ml
- How much strawberry juice should I add to make 1 litre?
 - 300ml
- I had two friends round the next day. If I make us all a cocktail the same, how much of each juice will I use.
 - 750ml of apple, 750ml of pineapple, 600ml of grapefruit and 900ml of strawberry.





- How many weeks in a year?
- How many days in a year?
- How can you tell if it is a leap year?
- How many days in 3 weeks?



I do

$\frac{1}{5}$ of 10

I do

$\frac{1}{2}$ of 40

Can you explain what has happened?

We do

$\frac{1}{3}$ of 36

Can you explain what has happened?

We do

Fractions of 40

- $1/2 = 20$

- $1/4 = 10$

- $1/8 = 5$

- $1/10 = 4$

Fractions of 36

- $1/2 = 18$

- $1/3 = 12$

- $1/4 = 9$

- $1/6 = 6$

Use the method shown to calculate the answer and write it on your whiteboard



I will know how to find a fraction of an amount.

You do

Independent Task

Please return in 20 minutes to the
Teams call

I will know how to find a fraction of an amount.

Plenary

Whitney has 12 chocolates.



On Friday, she ate $\frac{1}{4}$ of her chocolates and gave one to her mum. $\frac{1}{4}$ of 12 = 3 $12 - 3 = 9$ $9 - 1 = 8$

On Saturday, she ate $\frac{1}{2}$ of her remaining chocolates, and gave one to her brother. $\frac{1}{2}$ of 8 = 4 $4 - 1 = 3$

On Sunday, she ate $\frac{1}{3}$ of her remaining chocolates.
 $\frac{1}{3}$ of 3 = 1

How many chocolates does Whitney have left?

I will know how to find a fraction of an amount.

Plenary

$$\frac{1}{3} \text{ of } 60 = \frac{1}{4} \text{ of } \boxed{80}$$

$$\frac{1}{3} \text{ of } 60 = 20$$

$$\frac{1}{4} \text{ of } \underline{\quad\quad} = 20$$

$$4 \times 20 = 80$$

$$\frac{\boxed{10}}{10} \text{ of } 50 = \frac{1}{5} \text{ of } 25$$

$$\frac{1}{5} \text{ of } 25 = 5$$

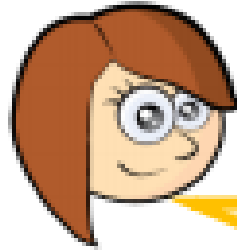
$$\frac{1}{\underline{\quad}} \text{ of } 50 = 5$$

$$50 \div 5 = 10$$

I will know how to find a fraction of an amount.

Plenary

Who has more? Explain why.



Rosie

I have $\frac{1}{4}$ of £8



Whitney

I have $\frac{1}{2}$ of £6