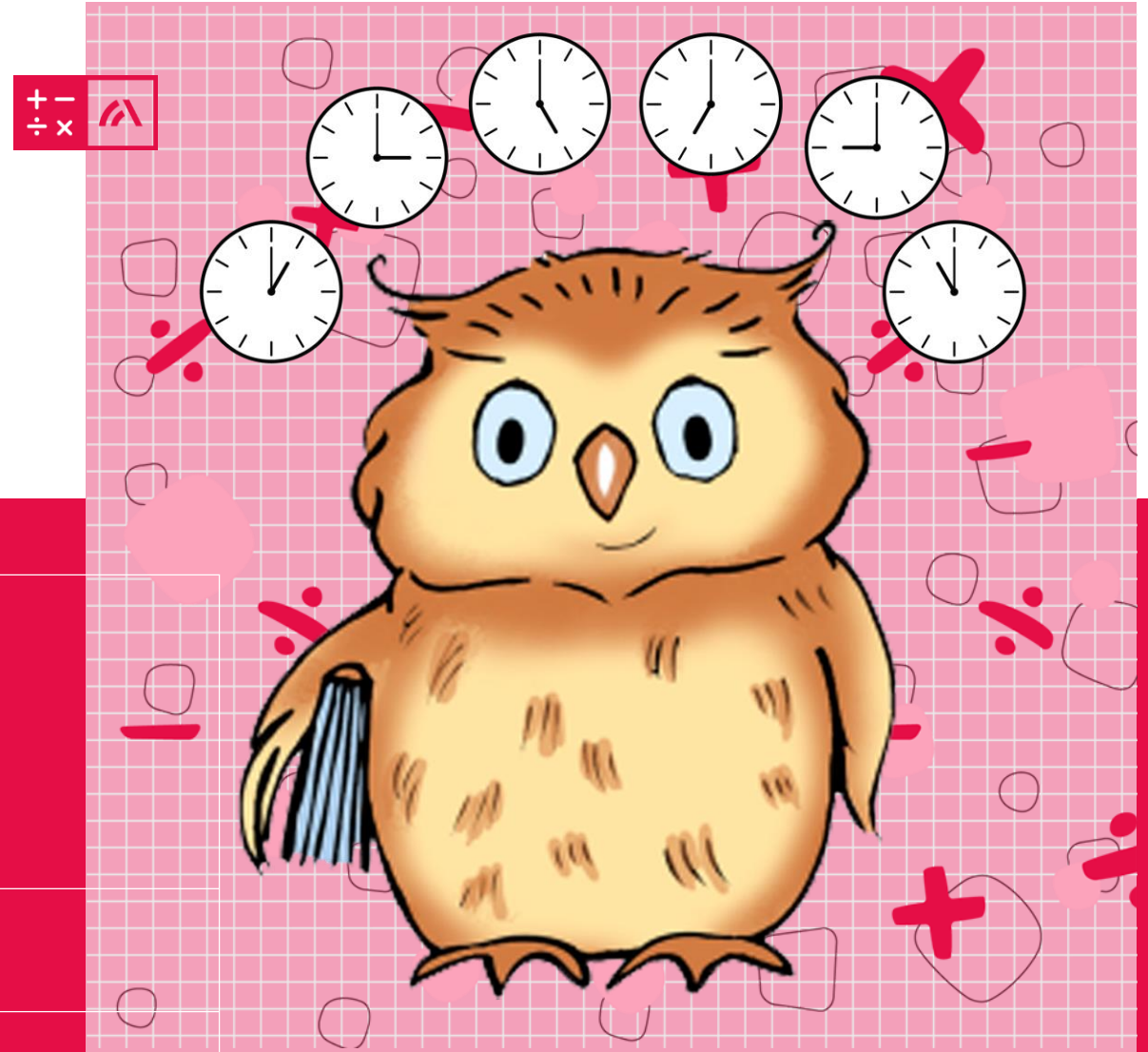


Year 2 Unit 7: Time

Lesson 7: Apply knowledge of time to sequence events

Mathematics
Mastery



To sequence daily events

How long?



How long does it take
to spend a day at
school?



How long does it take
to walk from the
carpet to the table?



How long does it take
to have a good
night's sleep?



Do Now



Key learning: To sequence daily events



morning



midday



afternoon

evening

night time

earlier



later



Star Words



To sequence daily events

Sequencing

Think about a usual Wednesday:

What time do you get up in the morning?

What time do you have breakfast?

What time do you come to school?

What time do you have lunch?

What time do you go home?

What time do you have dinner?

What time do you go to bed?



To sequence daily events

Sequencing – put the pictures in the right order, then say what is happening.

The diagram shows a sequence of daily events to be ordered. Each event is represented by a picture, a blank box for labeling, and a clock showing the time.

- Event 1:** A person sleeping in bed. Clock: 8:00.
- Event 2:** A person waking up in bed. Clock: 11:00.
- Event 3:** People at a bus stop. Clock: 10:00.
- Event 4:** A school building. Clock: 12:00.
- Event 5:** Two children leaving school. Clock: 3:00.
- Event 6:** A group of children walking. Clock: 8:00.



Talk task

To sequence daily events

Sequencing



Playtime is
at 11
o'clock.

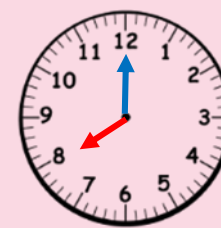
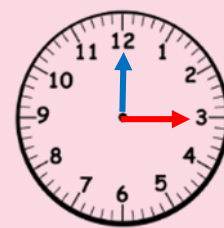
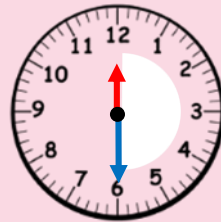
Afternoon
school starts
at 12.30

I go to bed
at eight
o'clock.

I wake up
at 8
o'clock.

I eat a
snack at
11.15.

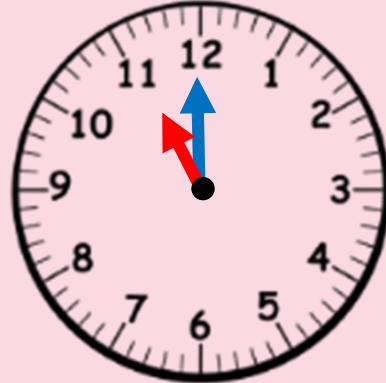
Hometime is
at 3 o'clock

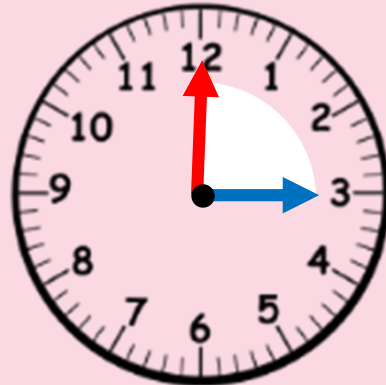


Talk task

Writing the time in words





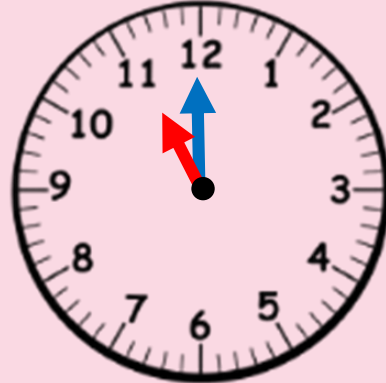




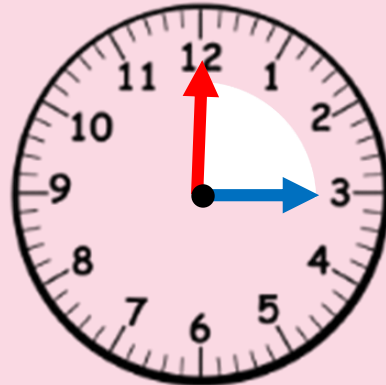
Writing the time in words



__ eight o'clock



__ eleven o'clock



__ three o'clock



School morning timeline

Create your own timeline for a typical school morning or for your morning at home.

Draw 5 pictures in the order you do them each day.

Decide what time you think each event happens?

Draw the hands on the clock to show that time.



First thing in the morning I get out of bed. This usually happens about 7 o'clock.

Next, I get dressed – I think this is about thirty minutes after I get up, so about half past seven.



Matching time

Which times match?

1 hour	1 minute	60 seconds	60 minutes
1 month	1 week	7 days	about 4 weeks
12 months	1 day	24 hours	1 year

