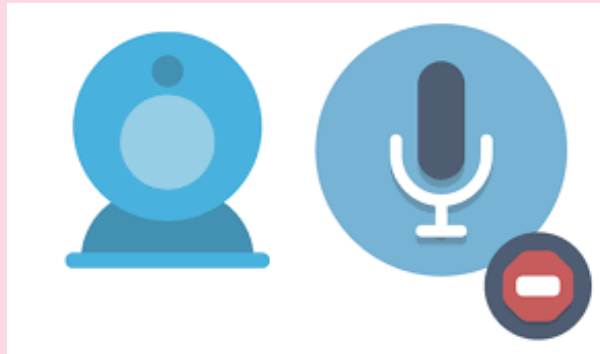


Welcome to Year 2 Maths - time

- The lesson will begin at 10.45
- Please keep your camera and microphone turned off.



You will need a pencil and some paper.

It will help if you have a clock or watch with hands to look at today.

Year 2 Unit 7: Time

Lesson 5: telling the time on an analogue clock.

Mathematics
Mastery



To read the time on an analogue clock.

Counting in fives

Let's count in fives to 50.



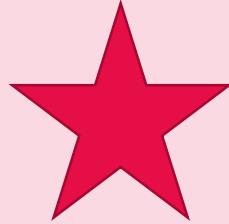
Do Now



Key learning: To read the time on an analogue clock.



hour



minute



hour hand

minute hand



scale

past



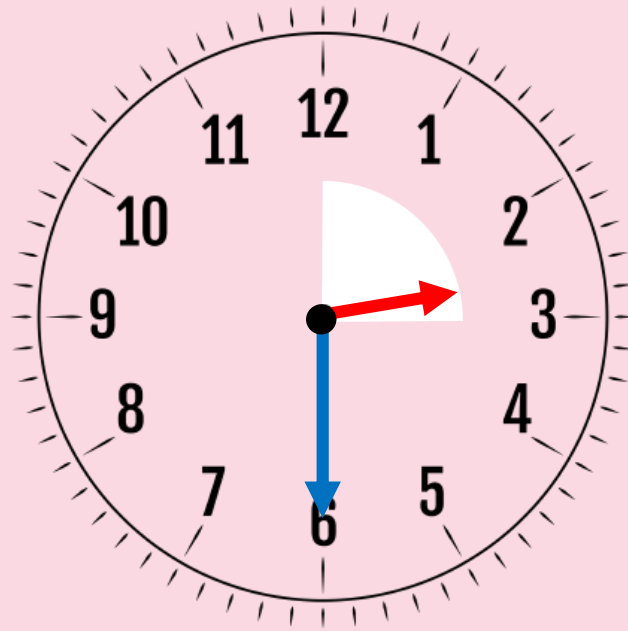
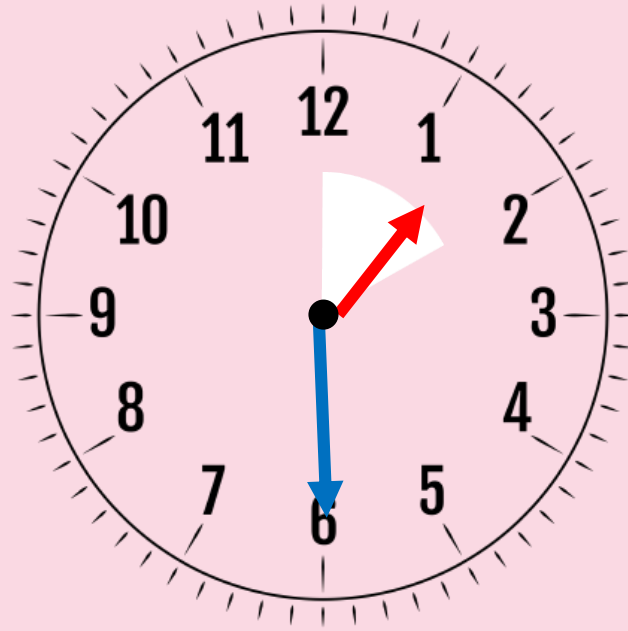
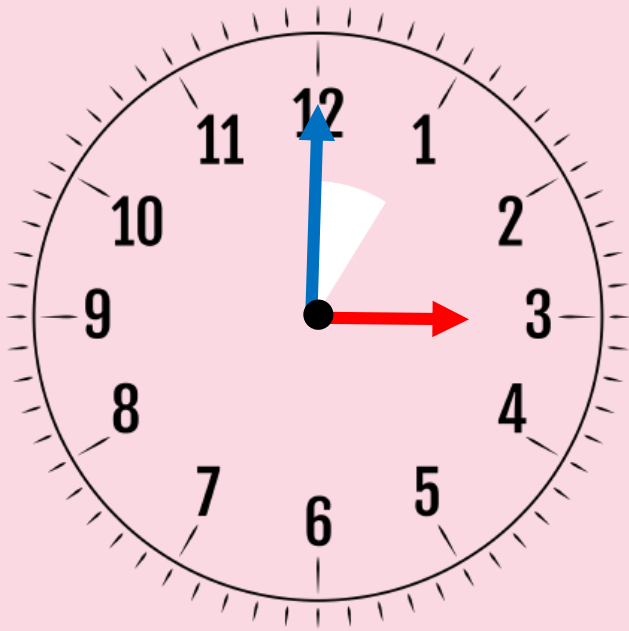
Star Words



To read the time on an analogue clock.

Identifying o'clock and half past

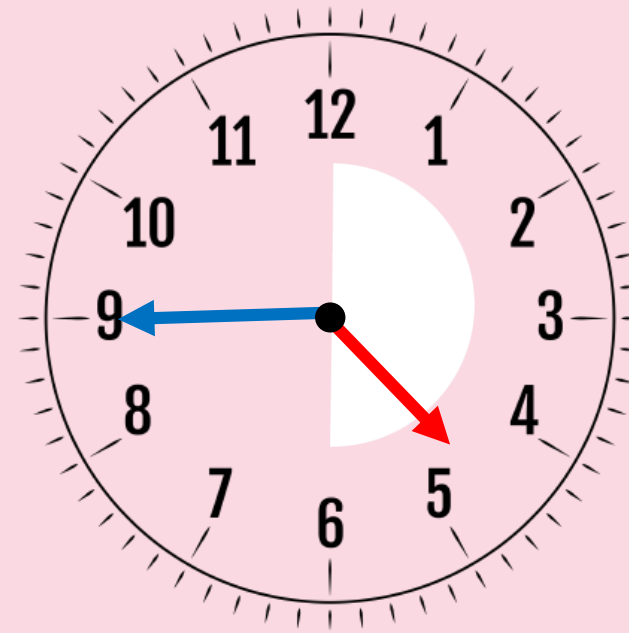
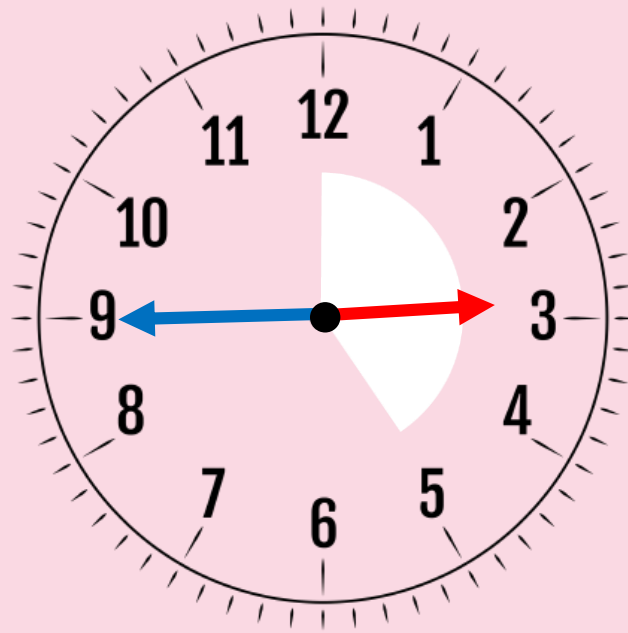
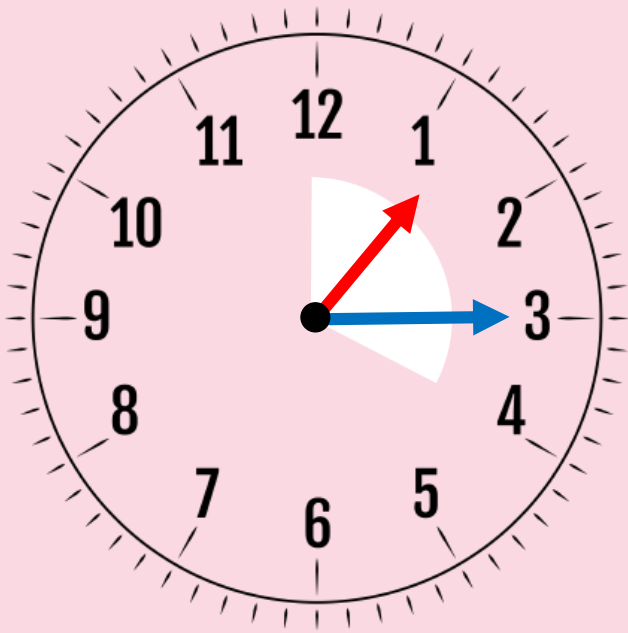
- What times do the clocks show?
- How do you know?



To read the time on an analogue clock.

Identifying quarter past and a quarter to.

- What times do the clocks show?
- How do you know?



New Learning



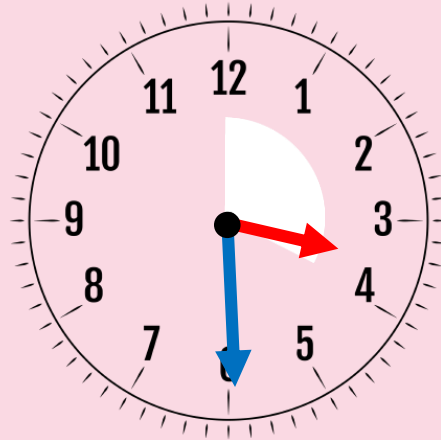
To read the time on an analogue clock.

Matching time

- Read the time aloud.
- Find the matching clock face and explain how you know you are correct.



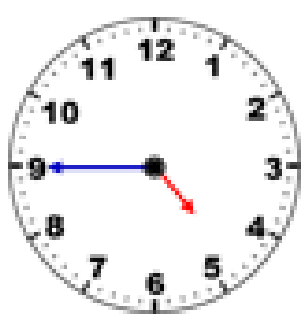
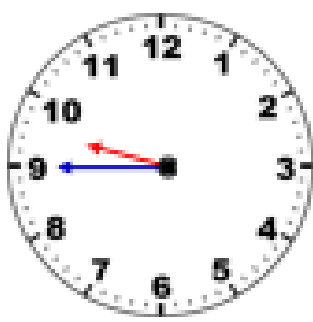
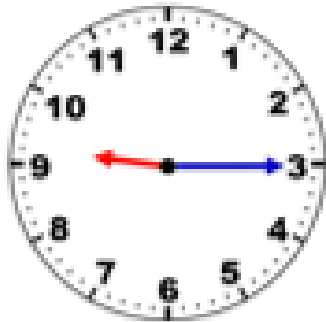
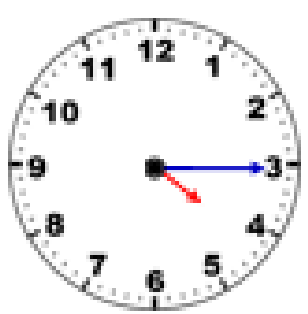
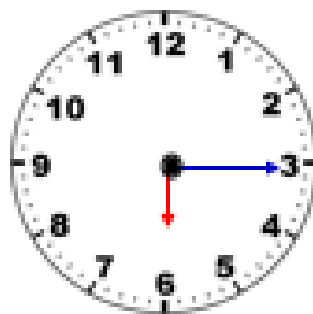
I have the
time – half
past three



This clock shows “half
past three” because
the minute hand is
pointing to the six. The
hour hand points to just
after four on the hour
scale.



Develop learning.

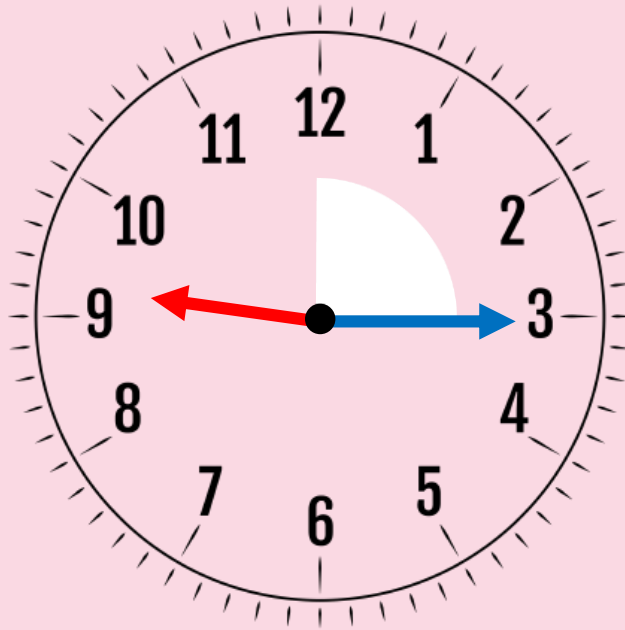


To read the time on an analogue clock.

Who's correct?

Who's read the time correctly?

It's quarter
to nine.



It's quarter
past nine.

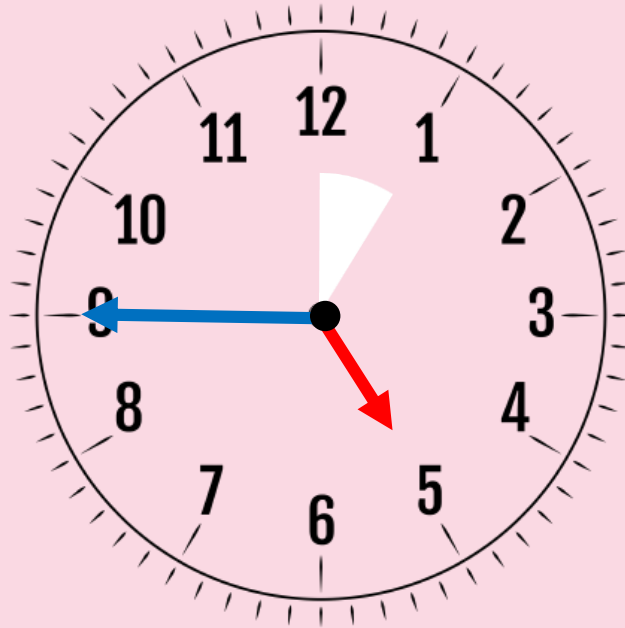


To read the time on an analogue clock.

Who's correct?

Who's read the time correctly?

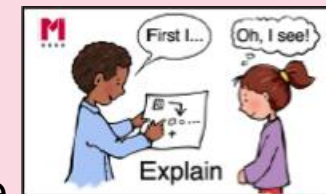
It's quarter
to five.



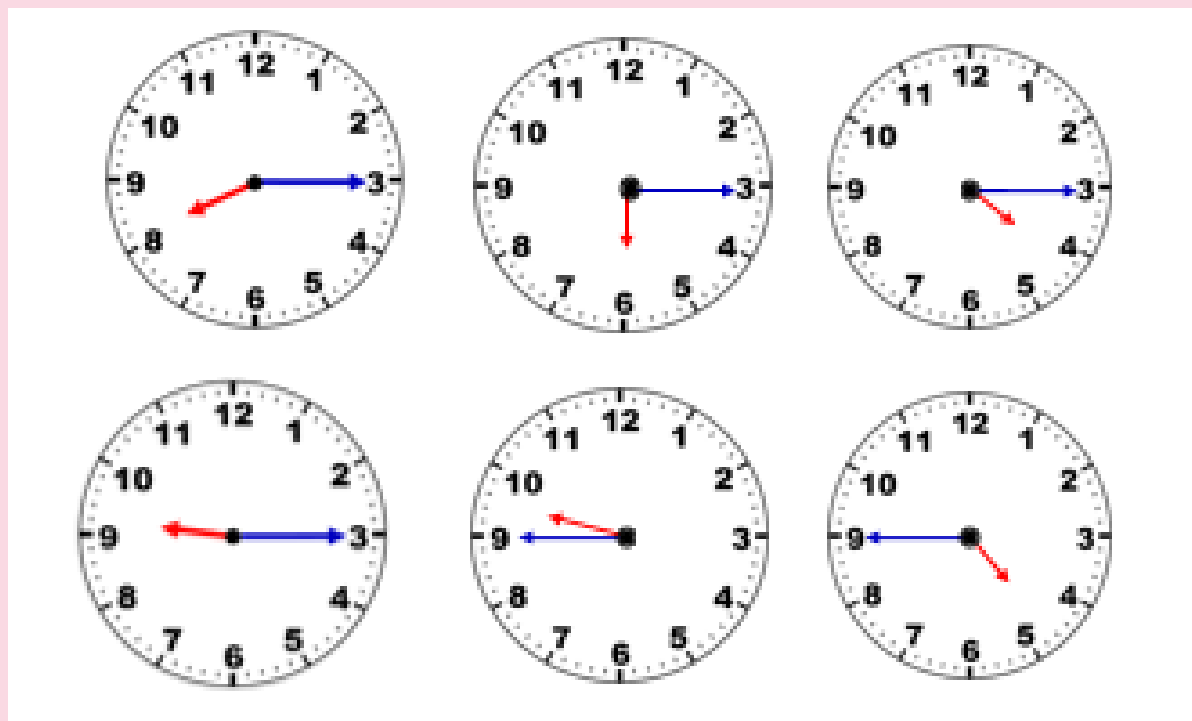
It's quarter
past five.



Key learning: To read the time on an analogue clock.



Say the times on the clocks then write the time using words.



Quarter
past

Quarter to

Challenge.

When you have finished write out the two times table.

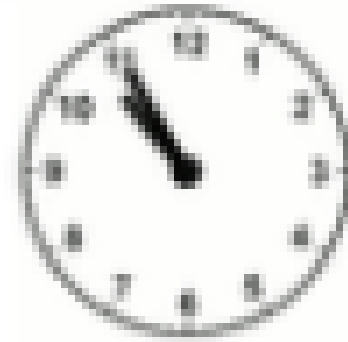
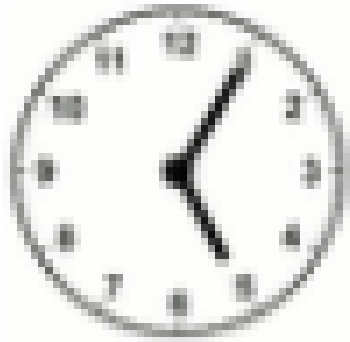


Independent Task



To read the time on an analogue clock.

Which clock says a quarter to 10?
How do you know?



Plenary

