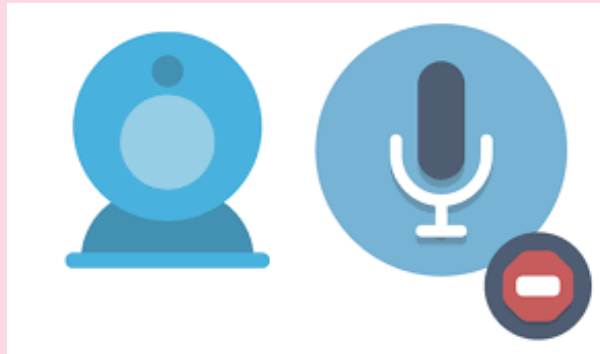


Welcome to Year 2 Maths - time

- The lesson will begin at 12.50
- Please keep your camera and microphone turned off.



You will need a pencil and some paper.

It will help if you have a clock or watch with hands to look at today.

Welcome to our lesson.

Friday 8th January 2021

Year 2 Unit 7: Time

Lesson 3: Quarter past

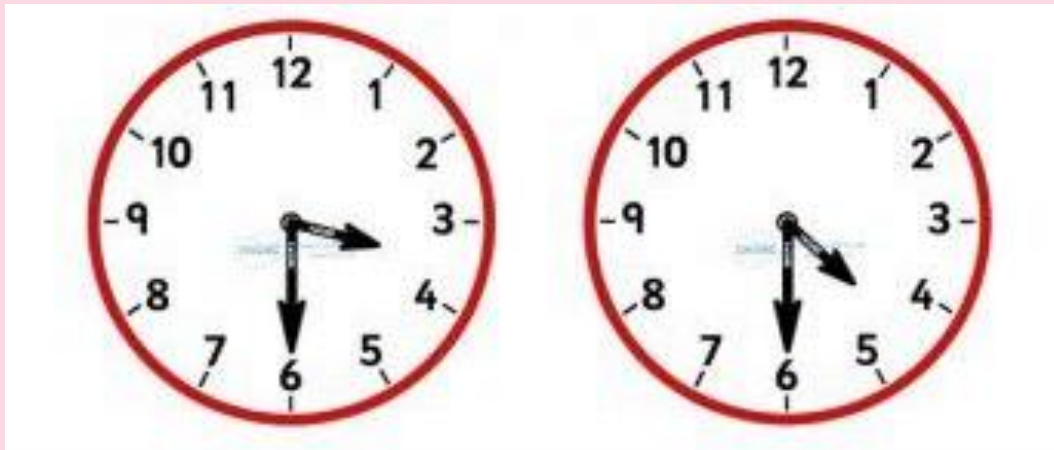
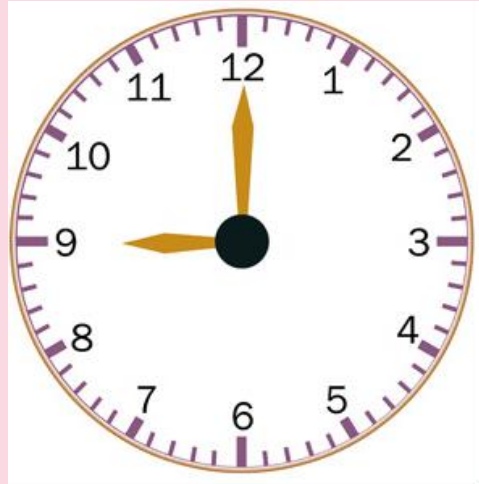
Mathematics
Mastery



To identify "quarter past" on an analogue clock

Stop the clock!

How quickly can you read these clocks?



Do Now



Key learning: To identify "quarter past" on an analogue clock



hour



minute



hour hand

minute hand

quarter past

half past



o'clock

scale



Star Words



To identify "quarter past" on an analogue clock

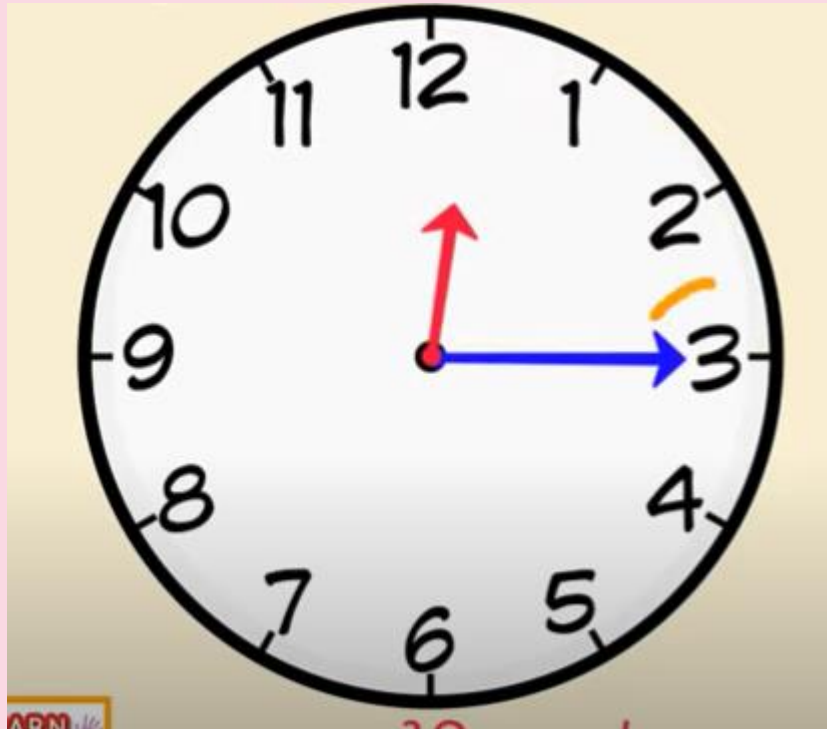
Identifying "quarter past" the hour

When the minute hand is on the 12, it is o'clock.

When the minute hand is on the 6, it is half past the hour.

If the minute hand is on the 3 it means it has gone a quarter of the way around the clock so we say it is a quarter past.

What time is this?

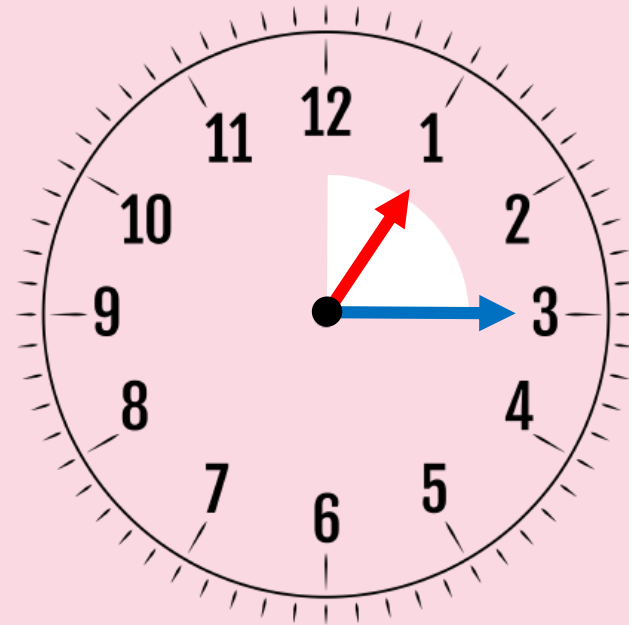
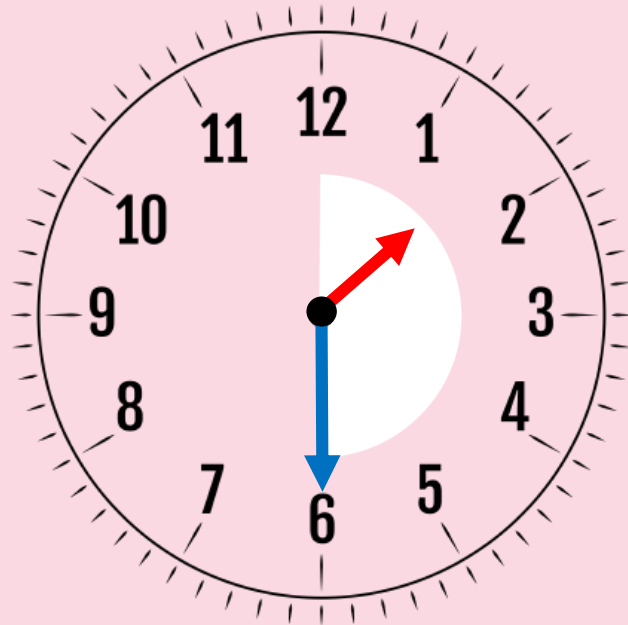
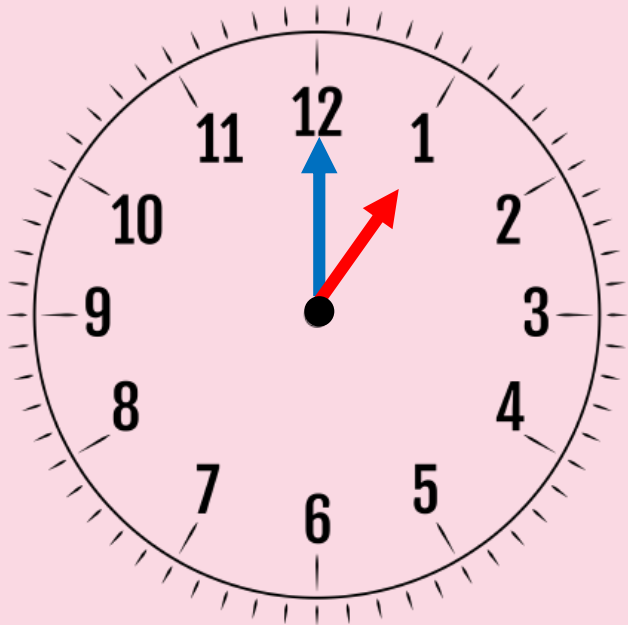


To identify "quarter past" on an analogue clock

Identifying "quarter past" the hour

What time does each clock show?

How do you know?



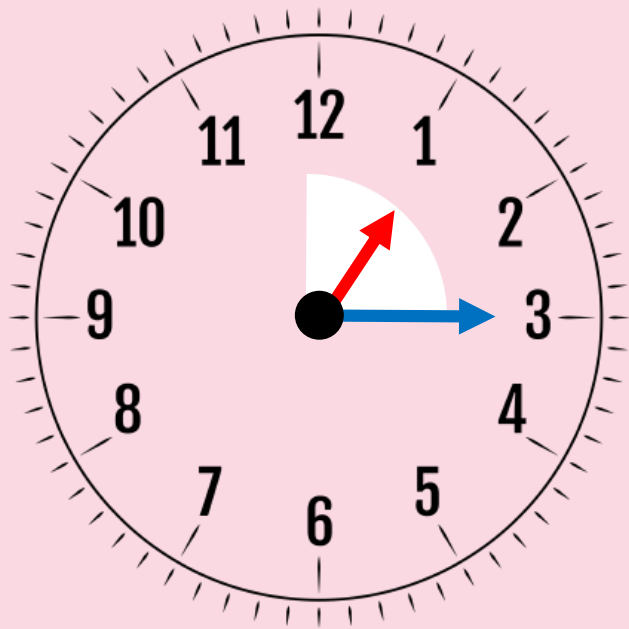
To identify "quarter past" on an analogue clock

Identifying "quarter past" the hour

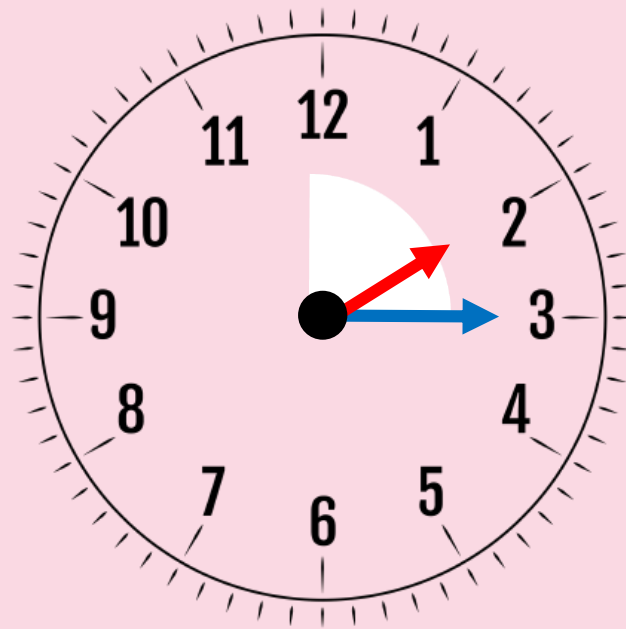
For a moving second hand, go to the Animations tab, click Animation Pane and Play All.

Always, sometimes or never?

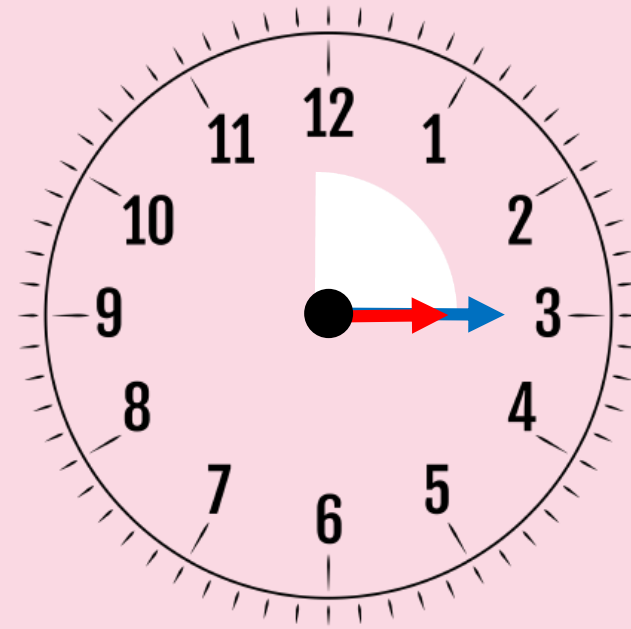
When the time is quarter past, the minute hand points to 15 on the minute scale.



Quarter past ?



Quarter past ?



Quarter past ?



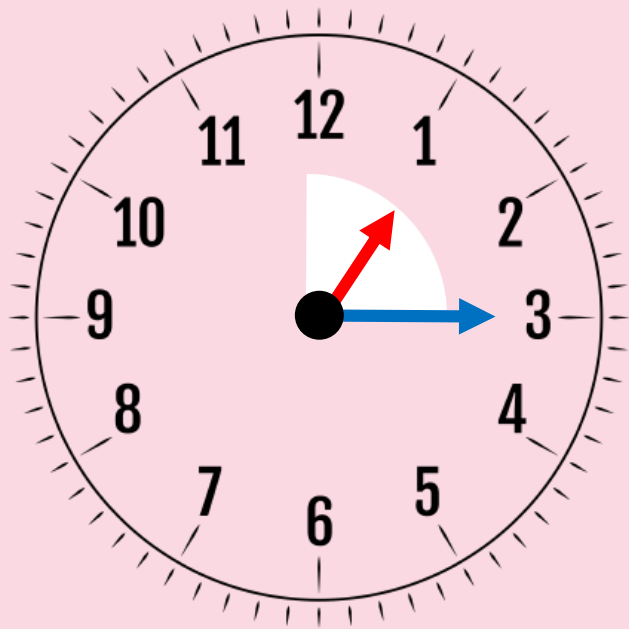
To identify "quarter past" on an analogue clock

Identifying "quarter past" the hour

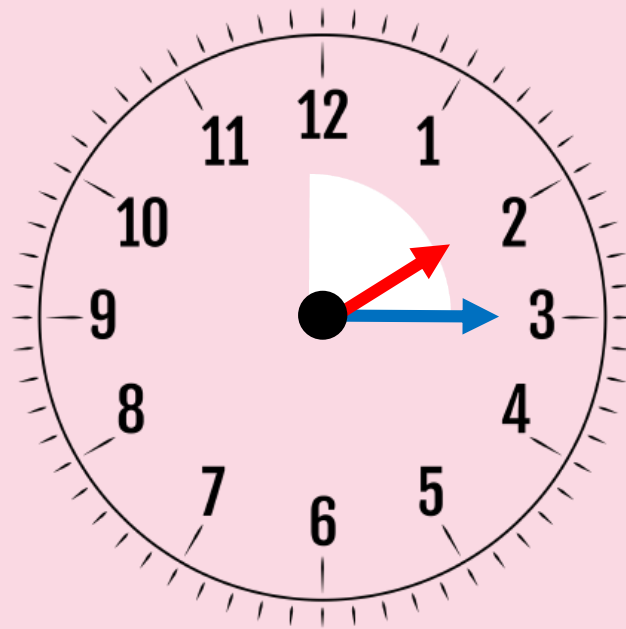
For a moving second hand, go to the Animations tab, click Animation Pane and Play All.

Always, sometimes or never?

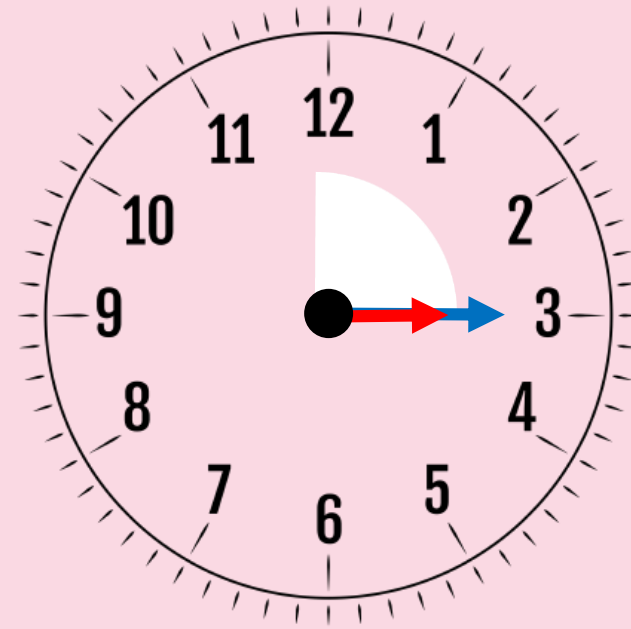
When the time is quarter past, the minute hand points to 15 on the minute scale.



Quarter past one



Quarter past two



Quarter past three



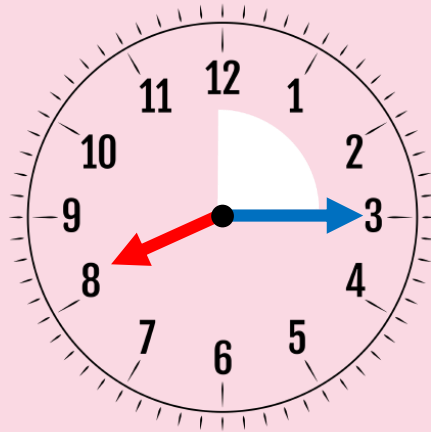
To identify "quarter past" on an analogue clock

O'clock, half past or quarter past?

Look at the clocks and decide which say a quarter past.
Explain how you know.



The clock
says a
quarter past
eight.

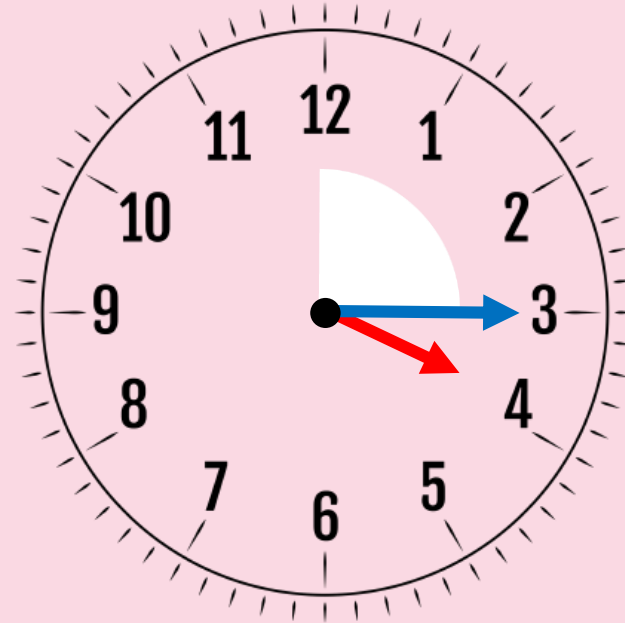
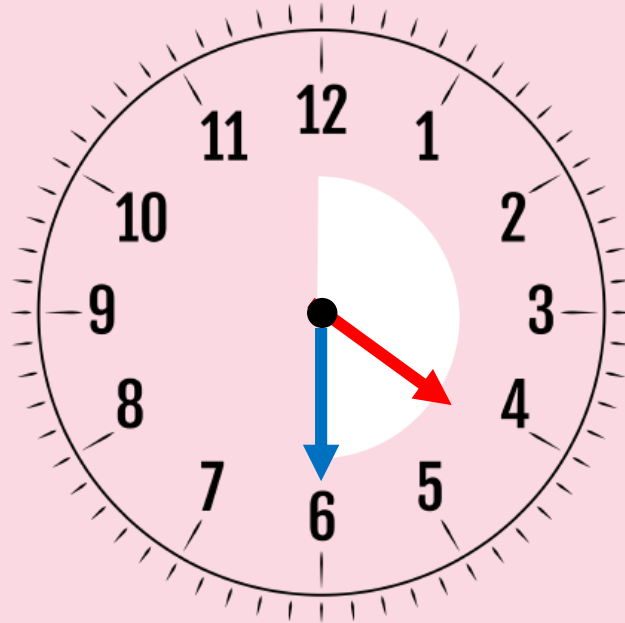
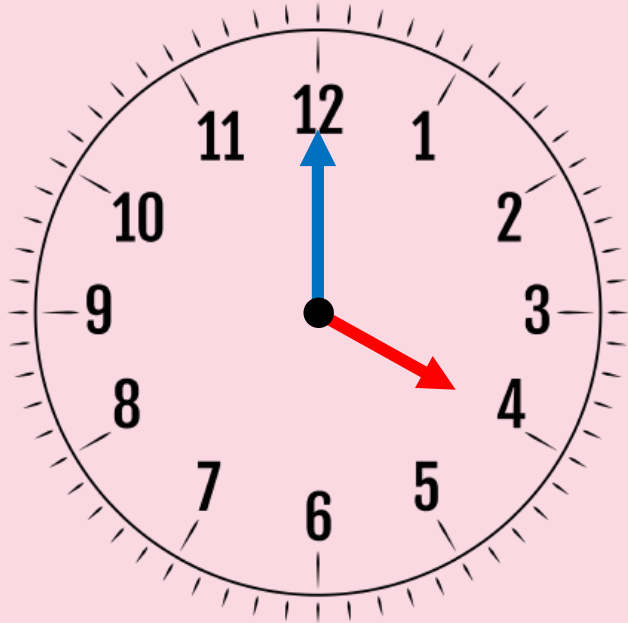
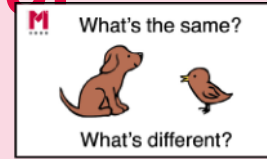


The clock shows
quarter past because
the minute hand is
pointing to 15 on the
minute scale. This is a
quarter of the way
around the clock. The
hour hand is just past 8.



To identify "quarter past" on an analogue clock

Find the clock that says "quarter past" the hour

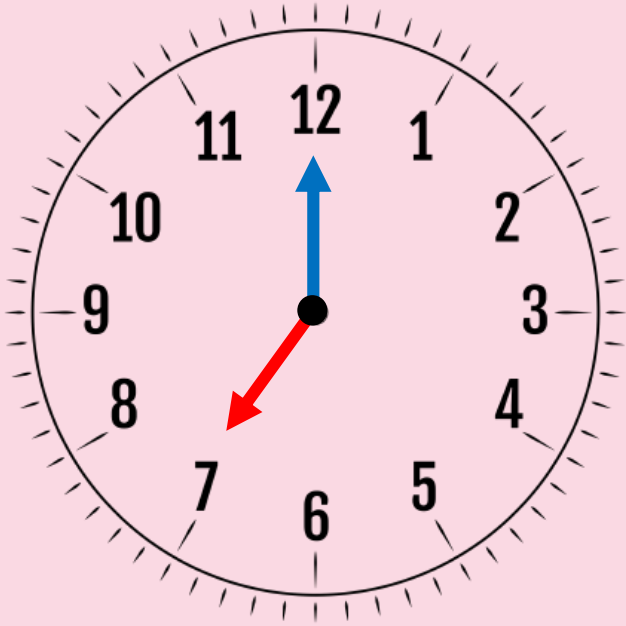


Talk task

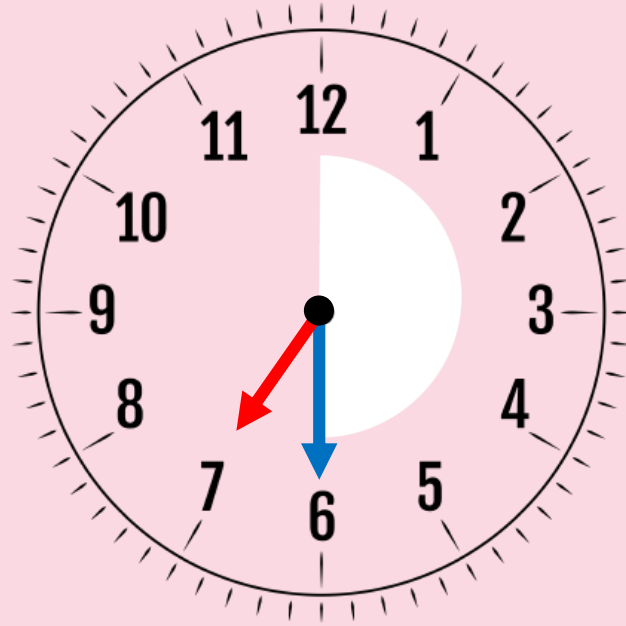


To identify "quarter past" on an analogue clock

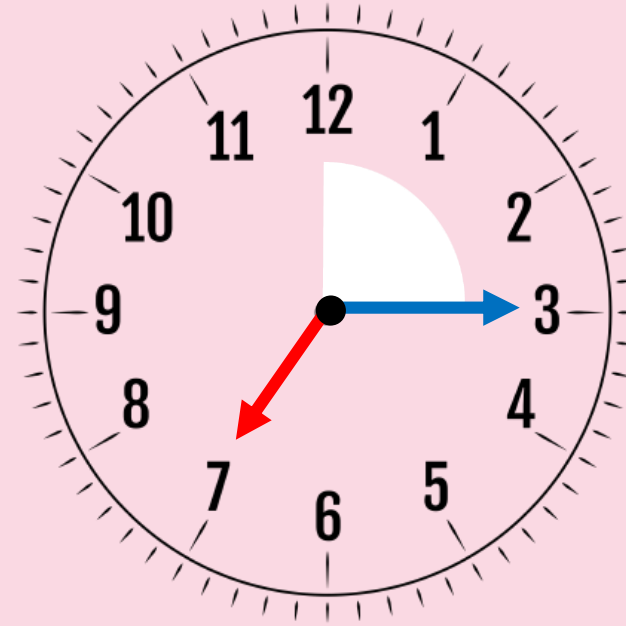
Finding "quarter past" the hour



Seven o'clock



Half past seven

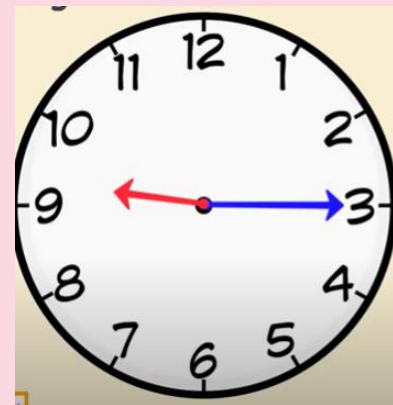
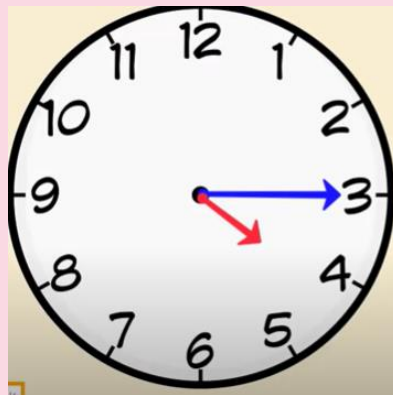
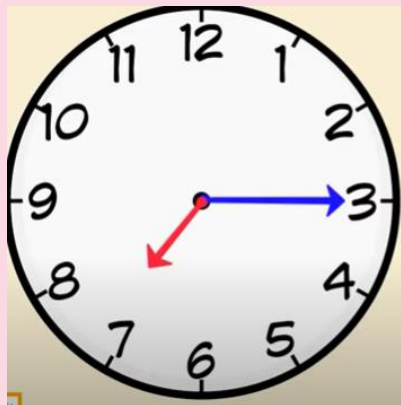
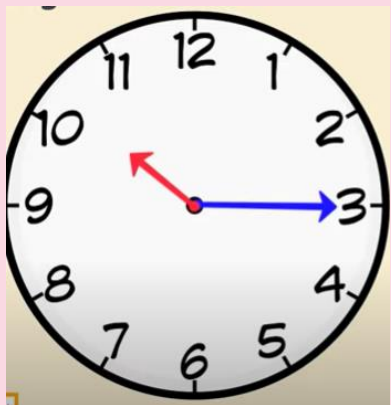


Quarter past seven



Key learning: To identify "quarter past" on an analogue clock

Draw the clocks then write the times underneath.



Challenge – can you think of some different quarter past times?



Independent Task



To identify "quarter past" on an analogue clock

Lisa's clocks

What time does Lisa get up?

What time does she eat her lunch?

